



**December  
2013**

# **YARZE 3244**

## **Progress Report**

**DOLTAEN**  
contracting

## CONTENTS

### 1. INTRODUCTION

- a. Introduction
- b. Project brief
- c. Project particulars

### 2. EXECUTIVE SUMMARY

- a. Project construction main data

### 3. PROGRESS OVER VIEW

- a. Progress of works

### 4. PHOTOS

1.

## a. INTRODUCTION

The progress report is an assessment that takes place during a project or process that conveys details such as what sub-goals have been accomplished, what resources have been expended, what problems have been encountered, and whether the project or process is expected to be completed on time and within budget.

It is intended to be a proactive decision- making document; a separate section on actions and alerts has been highlighted for each action along the due dates.

This report also provides a streamlined analysis of the actual, planned and forecasted events of the project.

The executive summary will provide brief information on the project status.

The general progress overview will provide details on progress achieved to date on the project. The progress that is reported encompasses time, cost, quality, risk, scope, procurement, resources, and safety management.

## b.PROJECT BRIEF

**YARZE 3244** is beautifully located on a property with an exceptional view on Southern Beirut. It provides luxurious services as the roof is transformed to a private pool with an exceptional panoramic view.

Located **in one of Beirut' s high-end suburbs** - Yarze - , it is a villa-like, two buildings four-storey each perfectly integrated within a high-density tree plantation area.

Each RDJ benefits from a private garden and terraces on different levels.

Below are some **of the project' s exterior views:**





Figure 1: Yarze 3244 / Blocks A & B / Consultant: DNA



**arze**  
3244

R02 Apartment 248m<sup>2</sup>  
Terraces = 200 m<sup>2</sup>  
Cave 7m<sup>2</sup> + 3 parkings

Architectural Consultancy  
**DNA**

**B-01**

This slide features a blue and green background with a white swoosh. On the left, the 'arze 3244' logo is displayed. A light green box contains the unit name 'R02 Apartment 248m<sup>2</sup>' and its features: 'Terraces = 200 m<sup>2</sup>' and 'Cave 7m<sup>2</sup> + 3 parkings'. The central focus is a detailed architectural floor plan of the apartment, showing room layouts, furniture placement, and a central kitchen area. To the right of the floor plan is a 3D architectural rendering of the building's exterior, showing its modern facade and a curved balcony. The rendering is set against a blue sky and a body of water. The DNA logo is located in the bottom left corner, and the unit identifier 'B-01' is in the bottom right corner.

**arze**  
3244

B-00 R02 Apartment 307 m<sup>2</sup>  
Terraces = 314 m<sup>2</sup>  
Cave 10.2m<sup>2</sup> + 3 parkings

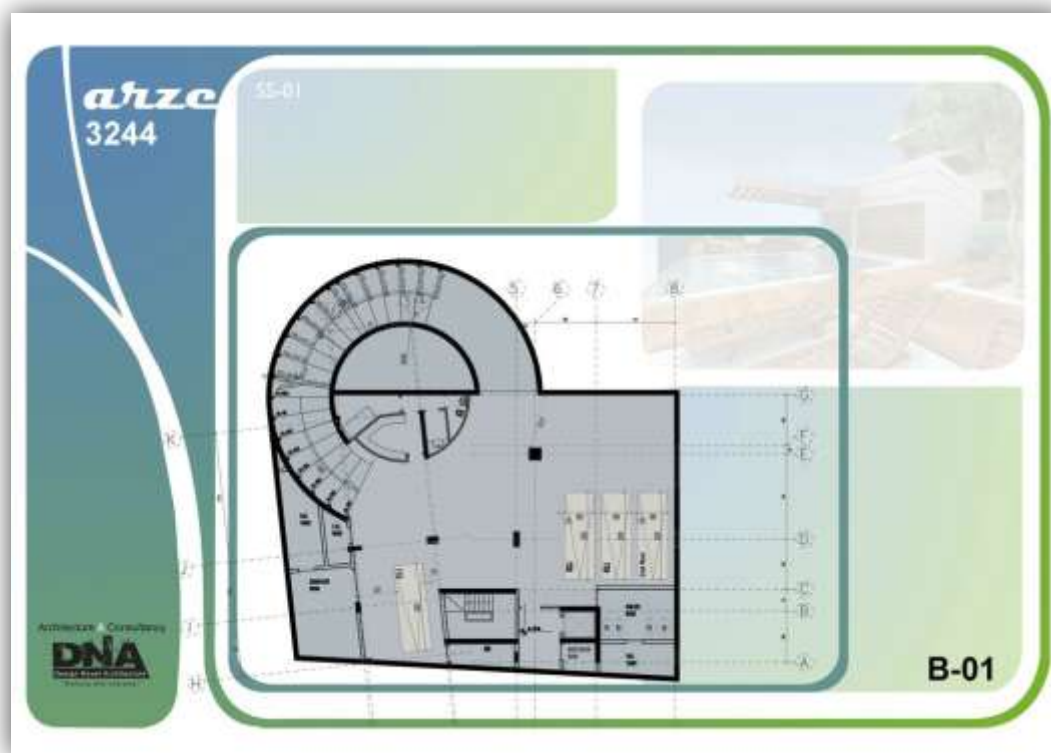
Architectural Consultancy  
**DNA**

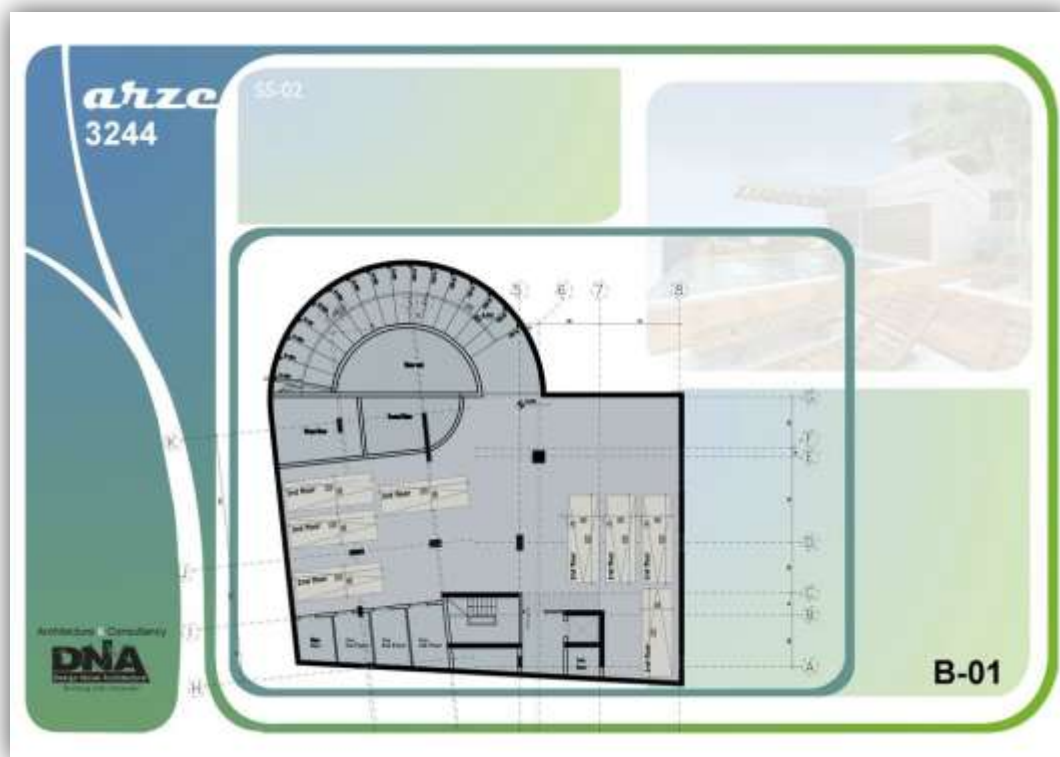
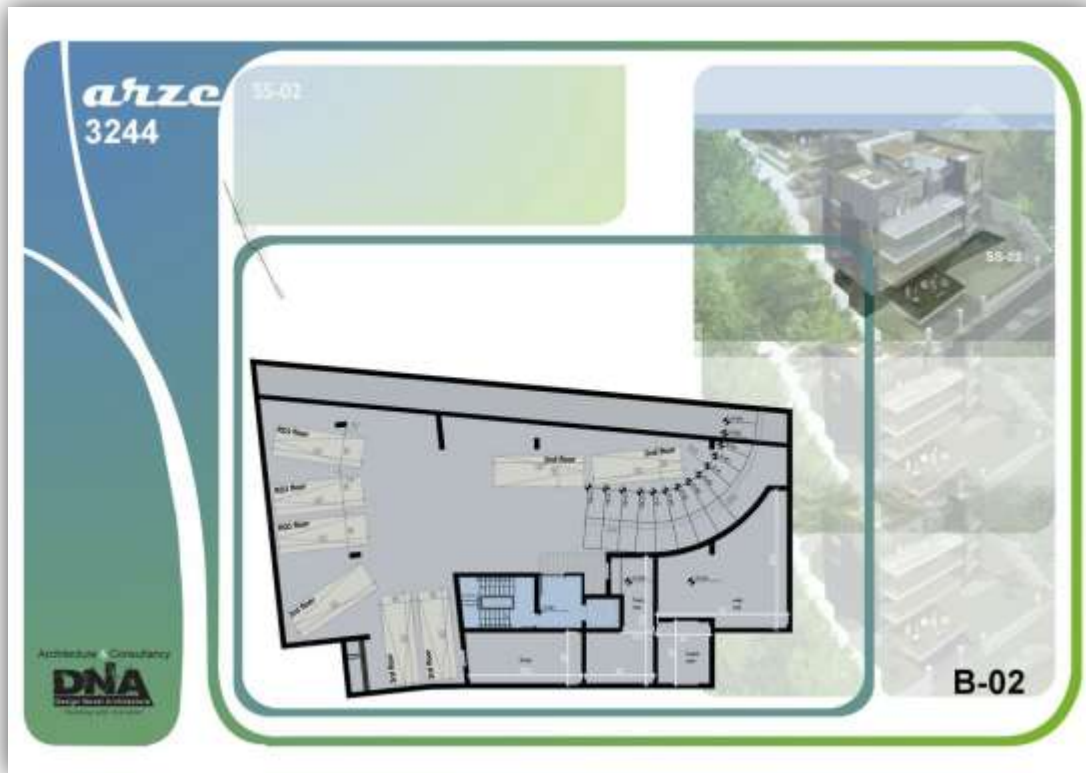
**B-02**

This slide has a similar layout to the one above. It features the 'arze 3244' logo on the left. A light green box contains the unit name 'B-00 R02 Apartment 307 m<sup>2</sup>' and its features: 'Terraces = 314 m<sup>2</sup>' and 'Cave 10.2m<sup>2</sup> + 3 parkings'. The central focus is a detailed architectural floor plan of the apartment, showing room layouts, furniture placement, and a central kitchen area. To the right of the floor plan is a 3D architectural rendering of the building's exterior, showing its modern facade and a curved balcony. The rendering is set against a blue sky and a body of water. The DNA logo is located in the bottom left corner, and the unit identifier 'B-02' is in the bottom right corner.









**arze**  
3244

B-01 typical Apartment 348m<sup>2</sup>

Terrace = 67 m<sup>2</sup>  
Cave Day + 2 parkings

Architect's Consensus  
**DNA**

B-01

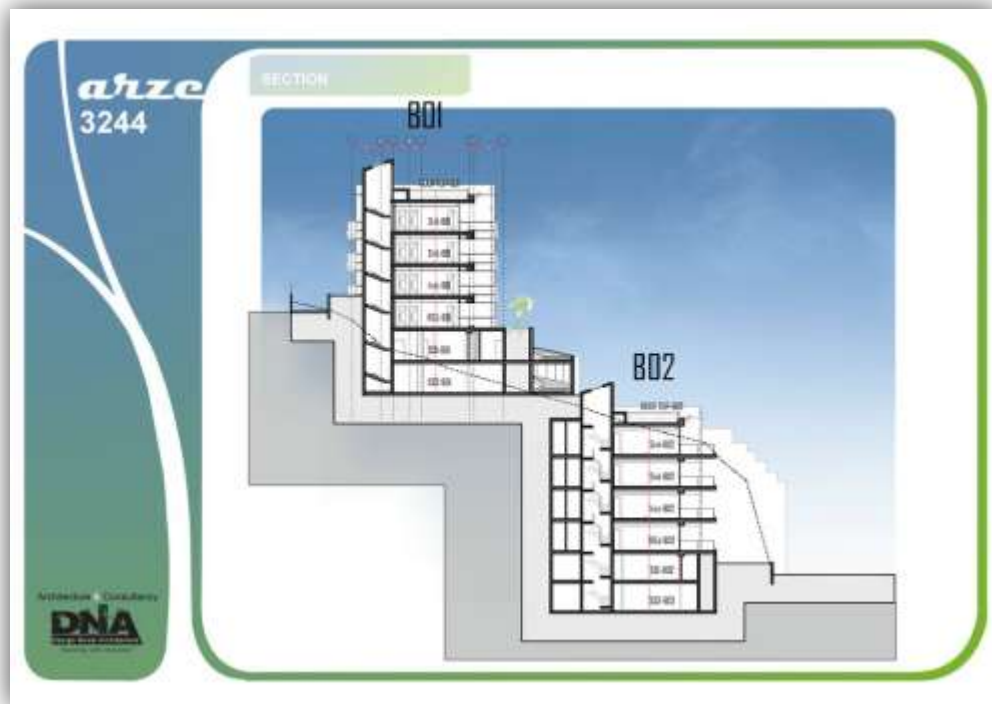
**arze**  
3244

B-02 typical Apartment 218.8m<sup>2</sup>

Terrace = 88 m<sup>2</sup>  
Cave 10.2m<sup>2</sup> + 2 parkings

Architect's Consensus  
**DNA**

B-02



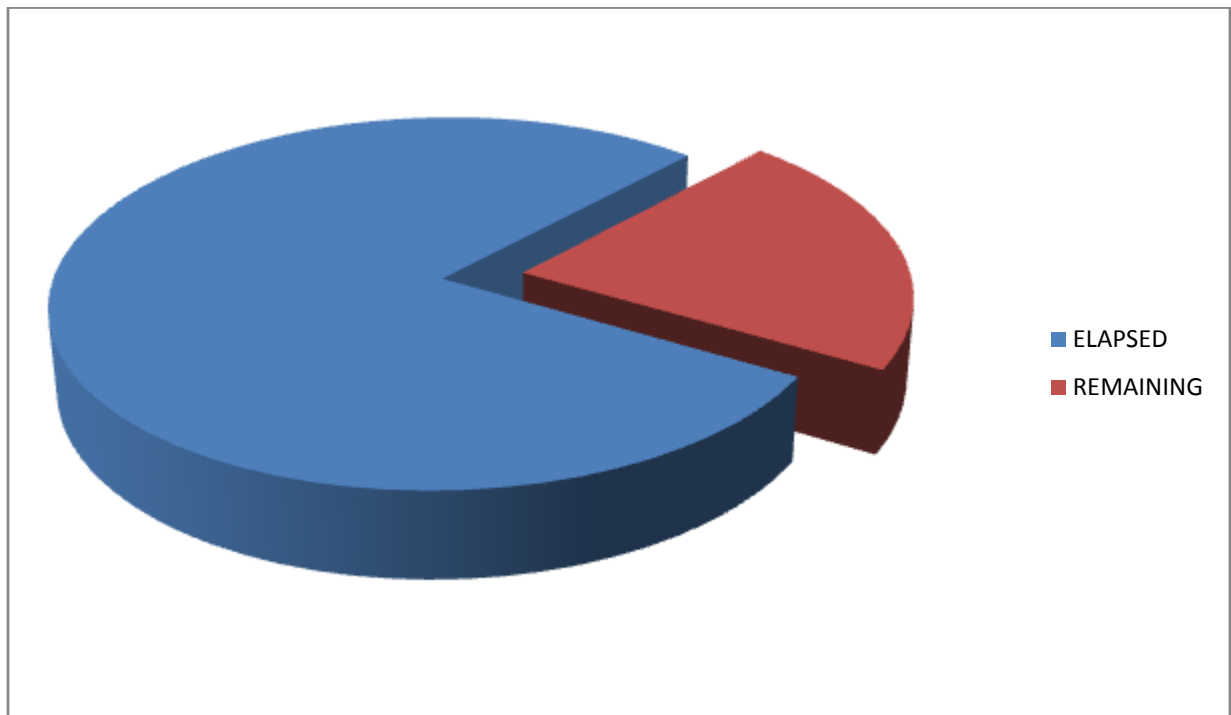
## PROJECT PARTICULARS

Project Title:	Yarze 3244	YAR
Location:	Beirut, Lebanon	
Owner:	BA Yarze 3244	BA
Developer:	Ideal Development	ID
Main Contractor:	Dolmen Contracting	DC
Consultant:	DNA	DNA

## c. EXECUTIVE SUMMARY

### PROJECT CONSTRUCTION MAIN DATA

Project name	
Project Budget	3,000,000 \$
Project Start Date	February 2012
Project Finish Date	---
Project Duration	487 days
Days Elapsed	---
Percentage Of days elapsed	---



<b>YARZEH PROJECT</b>	
PROJ. NO. : .....	
EMPLOYER: B. A. YARZEH	

<b>DAILY SITE DIARY &amp; PROGRESS REPORT</b>
---

Consultant: DNA	REF.:
CONTRACTOR: DOLMEN CONTRACTING	SHEET No. 1/1

ON SITE STAFF & LABOUR RECORD							
No.	TRADE	No.	Hrs	No.	TRADE	No.	Hrs
1	Project Manager			16	Driver		
2	Construction Manager			17	Welder		
3	Project Coordinator			18	Store keeper		
4	Civil Engineer			19	Electrician		
5	Foreman	1		20	Plumber		
6	surveyor	0		21	Waterproofing labours		
7	Labours	4		22	Watch man		
8	Crane operator	1		23	Office boy		
9	Excavator Operator			24			
10	Carpenter	1		25			
11	Steel Fixers	2		26			
12	Secretary			27			
13	House Keeping			28			
14	Time keeper			29			
15	Mason	1		30			

DAY: 16-12-2013      DATE:

WEATHER: Sunny    Cloudy    Rainy    Windy    Dusty

TEMPERATURE:      Minimum: C      Maximum:

ON SITE PLANT & EQUIPMENT RECORD							
No.	CATEGORY	No.	Hrs	No.	CATEGORY	No.	Hrs
1	Generator			16			
2	Bobcat			17			
3	Steel Binder			18			
4	Cutting machine			19			
5	crane			20			
6	Floating machine			21			
7				22			
8				23			
9				24			
10				25			
11				26			
12				27			
13				28			
Laying 1 FLOOR Block B							
15				30			

DELIVERY OF MATERIALS			
No.	MATERIAL	Qty.	Unit
1			
2			
3			
4			
5			
6			
7			
8			

Dibes contractor work on the Road 70% done

VISITORS ON SITE		
No.	NAME	ORGANIZATION
1		
2		
3		
4		
5		

DESCRIPTION OF WORKS DONE		
No.	WORKS	Qty.
1	Formwork and steel work on Wall Rampe Between Block A and B	
2	Electric work on Block A it's done 95%	
3	Electric work on Block B it's done 90%	
4	Plomber work on Block a and B Done 90%	
5	Painting The Wall Bssement 1 Block A	
6	Laying Block on Block A 100 %	
7	Laying Block on Block B 90 %	
8		
9		
10		
11		
12		

REMARKS	
1	
2	
3	
4	
5	

<b>YARZEH PROJECT</b>	
PROJ. NO. : .....	
EMPLOYER:                      B. A. YARZEH	

<b>DAILY SITE DIARY &amp; PROGRESS REPORT</b>
---

Consultant:     DNA	REF.:
CONTRACTOR: <b>DOLMEN CONTRACTING</b>	SHEET No. 1/1

ON SITE STAFF & LABOUR RECORD							
No.	TRADE	No.	Hrs	No.	TRADE	No.	Hrs
1	Project Manager			16	Driver		
2	Construction Manager			17	Welder		
3	Project Coordinator			18	Store keeper		
4	Civil Engineer			19	Electrician		
5	Foreman	1		20	Plumber		
6	surveyor	0		21	Waterproofing labours		
7	Labours	4		22	Watch man		
8	Crane operator	1		23	Office boy		
9	Excavator Operator			24			
10	Carpenter	1		25			
11	Steel Fixers	0		26			
12	Secretary			27			
13	House Keeping			28			
14	Time keeper			29			
15	Mason	1		30			

DAY:     17-12-2013                      DATE:

WEATHER:     Sunny     Cloudy     Rainy     Windy     Dusty

     \*              

TEMPERATURE:                      Minimum: C                      Maximum:

ON SITE PLANT & EQUIPMENT RECORD							
No.	CATEGORY	No.	Hrs	No.	CATEGORY	No.	Hrs
1	Generator			16			
2	Bobcat			17			
3	Steel Binder			18			
4	Cutting machine			19			
5	crane			20			
6	Floating machine			21			
7				22			
8				23			
9				24			
10				25			
11				26			
12				27			
13				28			
Laying 1 FLOOR Block B							
15				30			

DELIVERY OF MATERIALS			
No.	MATERIAL	Qty.	Unit
1			
2			
3			
4			
5			
6			
7			
8			

Dibes contractor work on the Road 70% done

VISITORS ON SITE		
No.	NAME	ORGANIZATION
1		
2		
3		
4		
5		

DESCRIPTION OF WORKS DONE		
No.	WORKS	Qty.
1	Formwork and steel work on Wall Rampe Between Block A and B	
2	Electric work on Block A it's done 95%	
3	Electric work on Block B it's done 90%	
4	Plomber work on Block a and B Done 90%	
5	Painting The Wall Bssement 1 Block A	
6	Laying Block on Block A 100 %	
7	Laying Block on Block B 90 %	
8	Pouring 8 m2 on thest Roof stairs Block A	
9		
10		
11		
12		

REMARKS	
1	
2	
3	
4	
5	



<b>YARZEH PROJECT</b>	
PROJ. NO. : .....	
EMPLOYER:                    B. A. YARZEH	

<b>DAILY SITE DIARY &amp; PROGRESS REPORT</b>
---

Consultant:     DNA	REF.:
CONTRACTOR: <b>DOLMEN CONTRACTING</b>	SHEET No. 1/1

ON SITE STAFF & LABOUR RECORD							
No.	TRADE	No.	Hrs	No.	TRADE	No.	Hrs
1	Project Manager			16	Driver		
2	Construction Manager			17	Welder		
3	Project Coordinator			18	Store keeper		
4	Civil Engineer			19	Electrician		
5	Foreman	1		20	Plumber		
6	surveyor	0		21	Waterproofing labours		
7	Labours	4		22	Watch man		
8	Crane operator	1		23	Office boy		
9	Excavator Operator			24			
10	Carpenter	1		25			
11	Steel Fixers	0		26			
12	Secretary			27			
13	House Keeping			28			
14	Time keeper			29			
15	Mason	1		30			

DAY:     18-12-2013                    DATE:

WEATHER:     Sunny     Cloudy     Rainy     Windy     Dusty

     \*              

TEMPERATURE:                    Minimum: C                    Maximum:

ON SITE PLANT & EQUIPMENT RECORD							
No.	CATEGORY	No.	Hrs	No.	CATEGORY	No.	Hrs
1	Generator			16			
2	Bobcat			17			
3	Steel Binder			18			
4	Cutting machine			19			
5	crane			20			
6	Floating machine			21			
7				22			
8				23			
9				24			
10				25			
11				26			
12				27			
13				28			
Laying 1 FLOOR Block B							
15				30			

DELIVERY OF MATERIALS			
No.	MATERIAL	Qty.	Unit
1			
2			
3			
4			
5			
6			
7			
8			

Dibes contractor work on the Road 70% done

VISITORS ON SITE		
No.	NAME	ORGANIZATION
1		
2		
3		
4		
5		

DESCRIPTION OF WORKS DONE		
No.	WORKS	Qty.
1	Formwork and steel work on Wall Rampe Between Block A and B	
2	Electric work on Block A it's done 95%	
3	Electric work on Block B it's done 90%	
4	Plomber work on Block a and B Done 90%	
5	Painting The Wall Bssement 1 Block A	
6	Laying Block on Block A 100 %	
7	Laying Block on Block B 90 %	
8		
9		
10		
11		
12		
13		

REMARKS	
1	
2	
3	
4	
5	
6	

<b>YARZEH PROJECT</b>	
PROJ. NO. : .....	
EMPLOYER: <span style="float: right;">B. A. YARZEH</span>	

<b>DAILY SITE DIARY &amp; PROGRESS REPORT</b>
---

Consultant: DNA	REF.:
CONTRACTOR: DOLMEN CONTRACTING	SHEET No. 1/1

ON SITE STAFF & LABOUR RECORD							
No.	TRADE	No.	Hrs	No.	TRADE	No.	Hrs
1	Project Manager			16	Driver		
2	Construction Manager			17	Welder		
3	Project Coordinator			18	Store keeper		
4	Civil Engineer			19	Electrician		
5	Foreman	1		20	Plumber		
6	surveyor	0		21	Waterproofing labours		
7	Labours	4		22	Watch man		
8	Crane operator	1		23	Office boy		
9	Excavator Operator			24			
10	Carpenter	1		25			
11	Steel Fixers	0		26			
12	Secretary			27			
13	House Keeping			28			
14	Time keeper			29			
15	Mason	1		30			

DAY: 19-12-2013      DATE:

WEATHER: Sunny    Cloudy    Rainy    Windy    Dusty

   \*           

TEMPERATURE:      Minimum: C      Maximum:

ON SITE PLANT & EQUIPMENT RECORD							
No.	CATEGORY	No.	Hrs	No.	CATEGORY	No.	Hrs
1	Generator			16			
2	Bobcat			17			
3	Steel Binder			18			
4	Cutting machine			19			
5	crane			20			
6	Floating machine			21			
7				22			
8				23			
9				24			
10				25			
11				26			
12				27			
13				28			
Laying 1 FLOOR Block B							
15				30			

DELIVERY OF MATERIALS			
No.	MATERIAL	Qty.	Unit
1			
2			
3			
4			
5			
6			
7			
8			

VISITORS ON SITE		
No.	NAME	ORGANIZATION
1		
2		
3		
4		
5		

DESCRIPTION OF WORKS DONE		
No.	WORKS	Qty.
1	Formwork and steel work on Wall Rampe Between Block A and B	
2	Electric work on Block A it's done 95%	
3	Electric work on Block B it's done 90%	
4	Plomber work on Block a and B Done 90%	
5	Painting The Wall Bssement 1 Block A	
6	Laying Block on Block A 100 %	
7	Laying Block on Block B 90 %	
8		
9		
10		
11		
12		
13		

REMARKS	
1	
2	
3	
4	
5	
6	

Dibes contractor work on the Road 70% done

<b>YARZEH PROJECT</b>	
PROJ. NO. : .....	
EMPLOYER: <b>B. A. YARZEH</b>	

<b>DAILY SITE DIARY &amp; PROGRESS REPORT</b>
---

Consultant: <b>DNA</b>	REF.:
CONTRACTOR: <b>DOLMEN CONTRACTING</b>	SHEET
	No. 1/1

ON SITE STAFF & LABOUR RECORD							
No.	TRADE	No.	Hrs	No.	TRADE	No.	Hrs
1	Project Manager			16	Driver		
2	Construction Manager			17	Welder		
3	Project Coordinator			18	Store keeper		
4	Civil Engineer			19	Electrician		
5	Foreman	1		20	Plumber		
6	surveyor	0		21	Waterproofing labours		
7	Labours	4		22	Watch man		
8	Crane operator	1		23	Office boy		
9	Excavator Operator			24			
10	Carpenter	1		25			
11	Steel Fixers	0		26			
12	Secretary			27			
13	House Keeping			28			
14	Time keeper			29			
15	Mason	1		30			

DAY: 20-12-2013      DATE:

WEATHER: Sunny    Cloudy    Rainy    Windy    Dusty

TEMPERATURE:      Minimum: C      Maximum:

ON SITE PLANT & EQUIPMENT RECORD							
No.	CATEGORY	No.	Hrs	No.	CATEGORY	No.	Hrs
1	Generator			16			
2	Bobcat			17			
3	Steel Binder			18			
4	Cutting machine			19			
5	crane			20			
6	Floating machine			21			
7				22			
8				23			
9				24			
10				25			
11				26			
12				27			
13				28			
Laying 1 FLOOR Block B							
15				30			

DELIVERY OF MATERIALS			
No.	MATERIAL	Qty.	Unit
1			
2			
3			
4			
5			
6			
7			
8			

Dibes contractor work on the Road 70% done

VISITORS ON SITE		
No.	NAME	ORGANIZATION
1		
2		
3		
4		
5		

DESCRIPTION OF WORKS DONE		
No.	WORKS	Qty.
1	Formwork and steel work on Wall Rampe Between Block A and B	
2	Electric work on Block A it's done 95%	
3	Electric work on Block B it's done 90%	
4	Plomber work on Block a and B Done 90%	
5	Painting The Wall Bssement 1 Block A 90 %	
6	Laying Block on Block A 100 %	
7	Laying Block on Block B 90 %	
8	Plastering bassement 2 Block A Done 100 %	
9	Painting The Wall Bssement 2 Block A	
10		
11		
12		
13		

REMARKS	
1	
2	
3	
4	
5	
6	

<b>YARZEH PROJECT</b>	
PROJ. NO. : .....	
EMPLOYER: <span style="float: right;">B. A. YARZEH</span>	

<b>DAILY SITE DIARY &amp; PROGRESS REPORT</b>
---

Consultant: DNA	REF.:
CONTRACTOR: <b>DOLMEN CONTRACTING</b>	SHEET No. 1/1

ON SITE STAFF & LABOUR RECORD							
No.	TRADE	No.	Hrs	No.	TRADE	No.	Hrs
1	Project Manager			16	Driver		
2	Construction Manager			17	Welder		
3	Project Coordinator			18	Store keeper		
4	Civil Engineer			19	Electrician		
5	Foreman	1		20	Plumber		
6	surveyor	0		21	Waterproofing labours		
7	Labours	4		22	Watch man		
8	Crane operator	1		23	Office boy		
9	Excavator Operator			24			
10	Carpenter	1		25			
11	Steel Fixers	0		26			
12	Secretary			27			
13	House Keeping			28			
14	Time keeper			29			
15	Mason	1		30			

DAY: 21-12-2013      DATE:

WEATHER: Sunny   Cloudy   Rainy   Windy   Dusty

  
  \*   
    
   

TEMPERATURE:      Minimum: C      Maximum:

ON SITE PLANT & EQUIPMENT RECORD							
No.	CATEGORY	No.	Hrs	No.	CATEGORY	No.	Hrs
1	Generator			16			
2	Bobcat			17			
3	Steel Binder			18			
4	Cutting machine			19			
5	crane			20			
6	Floating machine			21			
7				22			
8				23			
9				24			
10				25			
11				26			
12				27			
13				28			
Laying 1 FLOOR Block B							
15				30			

DELIVERY OF MATERIALS			
No.	MATERIAL	Qty.	Unit
1			
2			
3			
4			
5			
6			
7			
8			

Dibes contractor work on the Road 70% done

VISITORS ON SITE		
No.	NAME	ORGANIZATION
1		
2		
3		
4		
5		

REMARKS	
1	
2	
3	
4	
5	
6	

DESCRIPTION OF WORKS DONE		
No.	WORKS	Qty.
1	Formwork and steel work on Wall Rampe Between Block A and B	
2	Electric work on Block A it's done 95%	
3	Electric work on Block B it's done 90%	
4	Plomber work on Block a and B Done 90%	
5	Painting The Wall Bssement 1 Block A 90 %	
6	Laying Block on Block A 100 %	
7	Laying Block on Block B 90 %	
8	Plastering bassement 2 Block A Done 100 %	
9	Painting The Wall Bssement 2 Block A	
10		
11		
12		
13		

**Project Photographs - December 2013**





