



March
2013

V-VERDUN

Progress Report

CONTENTS

1. INTRODUCTION
 - a. Introduction
 - b. Project brief
 - c. Project particulars

2. EXECUTIVE SUMMARY
 - a. Project construction main data

3. PROGRESS OVER VIEW
 - a. Progress of works
 - b. Quality management
 - c. Procurement management
 - d. Health & Safety management

4. PROGRESS PHOTOGRAPHS

1.

a. Introduction

The progress report is an assessment that takes place during a project or process, that conveys details such as what sub-goals have been accomplished, what resources have been expended, what problems have been encountered, and whether the project or process is expected to be completed on time and within budget.

It is intended to be a proactive decision- making document; a separate section on actions and alerts has been highlighted for each action along the due dates.

This report also provides a streamlined analysis of the actual, planned and forecasted events of the project.

The executive summary will provide brief information on the project status.

The general progress overview will provide details on progress achieved to date on the project. The progress that is reported encompasses time, cost, quality, risk, scope, procurement, resources, and safety management.

b. Project Brief

Busy, vibrant and exciting, Verdun epitomizes a certain life style which we sought to **reflect in the name of our latest ambitious project.** “**La Vie Verdun**” became our working title which finally evolved into V Verdun.

V Verdun is a new modern complex containing a mix of shopping centre, office space, car parking and 22 large 3 master bedroom apartments. The development is presented over 23 levels on an old site on the famed Verdun Street itself, at the junction of Bachir Kassar Street.

Meticulously designed, the entire concept is based on living, working and taking ones leisure in a spacious, light and airy, open environment for the individuals seeking affordable luxury in the heart of vibrant Verdun, in the heart of exciting Beirut, with easy and convenient access to all that Lebanon has to offer.

V Verdun, sited adjacent to Verdun 730 on the west side of the avenue will provide 22 new-build apartments which will further enhance the ambience of the area and provide its residence with the perfect home, in the perfect district of the perfect capital city.

Below are some views of the project’ s exterior and interior views:















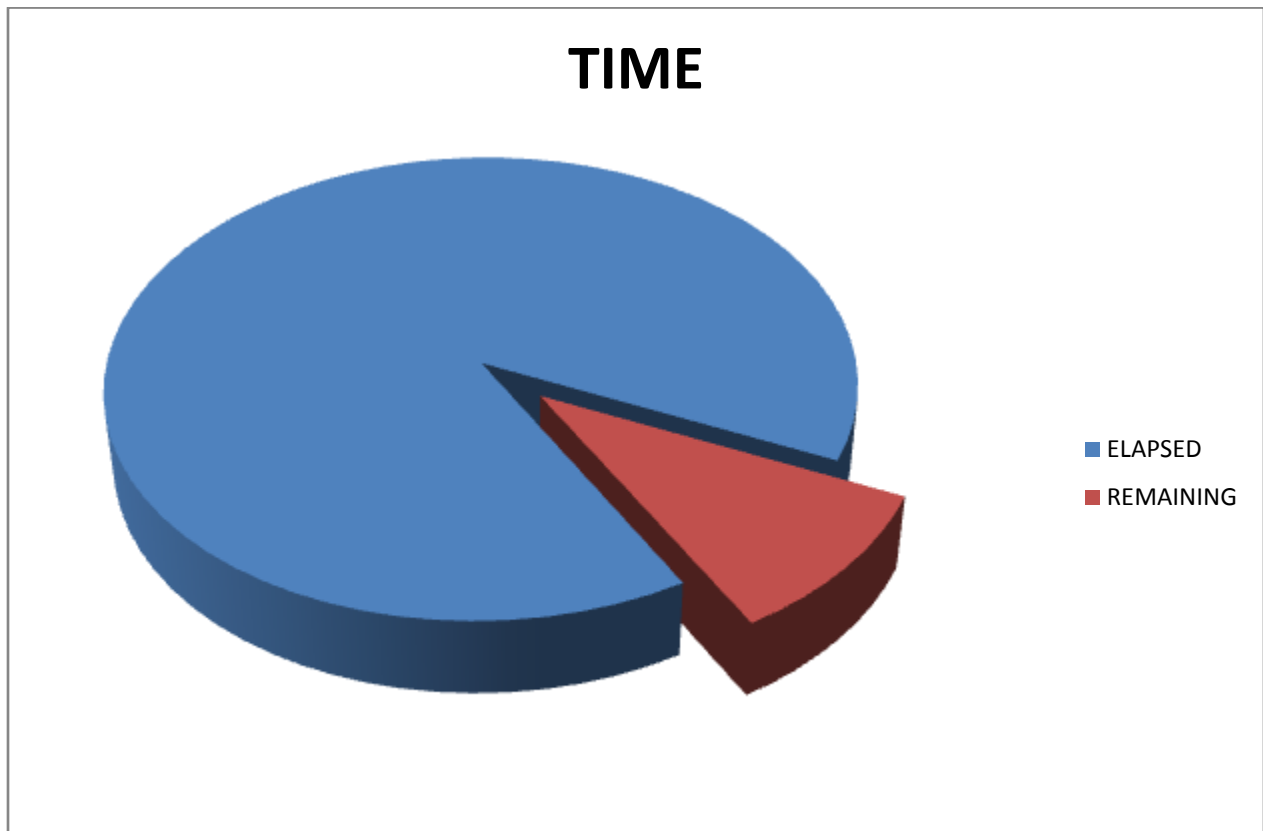
c. Project Particulars

<u>Project Title:</u>	V-Verdun	VV
<u>Location:</u>	Beirut, Lebanon	
<u>Owner:</u>	BA Verdun	BAV
<u>Developer:</u>	Trillium Development	TD
<u>Main Contractor:</u>	Dolmen Contracting	DC
<u>Architectural Consultant:</u>	DNA	DNA
<u>Shoring Subcontractor:</u>	MGM	MGM
<u>Excavation Subcontractor:</u>	Contract	Contract
<u>Concrete Subcontractor</u>	Matar Contracting	MC

2. EXECUTIVE SUMMARY

Project construction main data

Project name	V-VERDUN
Project Budget	TBA
Project Start Date	---
Project Finish Date	---
Project Duration (days)	---
Days Elapsed	---
Percentage Of days elapsed	---



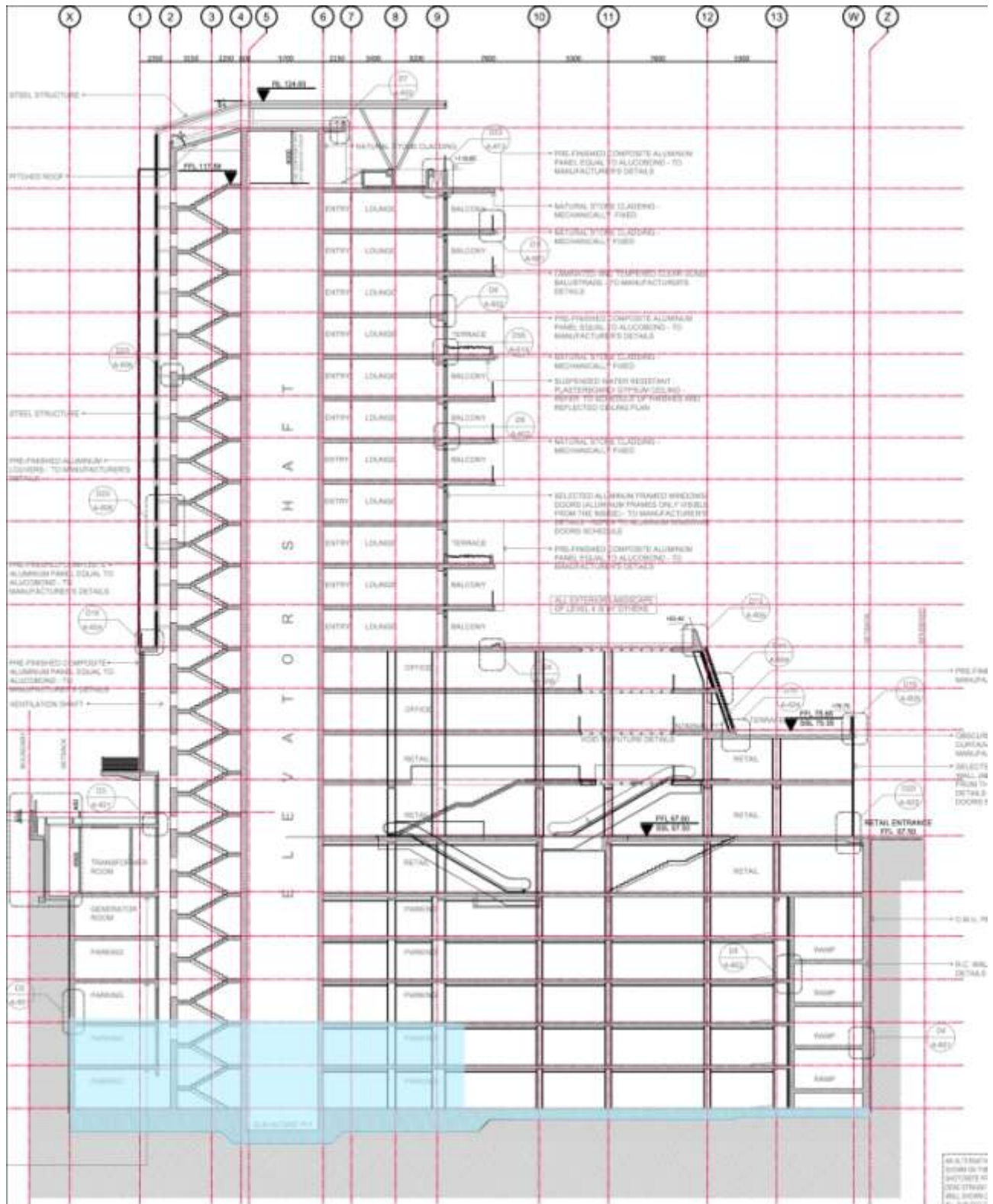
3. PROGRESS OVERVIEW

a. Progress of works

Subcontractor	Division	Description	Completion	Comments
MGM	Shoring	Shoring	100%	---

Contract	Excavation	Excavation	100%	---
-----------------	------------	------------	------	-----

Matar Contracting	Concrete	Raft Foundation	90%	
		Slabs	10%	Basement 6 and 5 ceilings complete from axes 1 to 9



b. Quality Management

Quality management is now accepted as the way to improve standards Industry' s competitiveness and reputation both at home and abroad. Effective and well monitored quality management system ensure that customers (clients) requirements are considered at all stages, guaranteeing good design, reliable performance, prompt delivery and efficient service leading to increased customer confidence and corporate credibility.

The ISO (International Standard organization) standard 9001 is now accepted by all member countries as the basis for certification of quality management systems, and throughout the world companies are introducing and working to this standard.

Many people believe that the standard is only applicable to a manufacturing company, this is not so. It is a management system that can be applied to any organization in any sector of industry or commerce and of any size. Many Administrations, Municipal Authorities, Colleges, and Universities control their operations by the standard and in turn require contractors who work for them to be approved to the standard.

To understand why the standard is being adopted on such large scale, we must first have an appreciation of quality control and quality assurance concepts. Throughout industry and commerce considerable resources are used to inspect and check. Many tasks have to be carried out a second time due to some form of error detected by these inspections and checks. Whilst this ensures that eventually the customer or user of the service receives satisfaction, it is obviously costly and a waste of resources. This approach is quality control. An alternative way is to introduce controls within the organization to prevent errors taking place rather than allowing them to occur and then have to inspect them out at the end. This approach is quality assurance.

c. Procurement Management

Procuring goods and services from external suppliers can be a critical path for many projects. Often, the performance of the supplier will reflect on the performance of the overall project team. It's therefore crucial that you manage suppliers' performance carefully, to ensure that they produce deliverables which meet the expectations.

Dolmen Contracting will be producing a detailed procurement report for each project. In addition to the statuses of payments and goods, the report will include a description of any problems with suppliers/subcontractors that may have been encountered during the procurement/purchase processes.

d.Safety Management

OBJECTIVES

The objective of DOLMEN CONTRACTING (DC) is to control or minimize lost time injuries/accidents (LTI/A) in all project operations, and to promote an accident and injury-free (AIF) culture. Our goals are to identify and follow the most suitable and applicable local and international standards in the construction industry within a STEP CHANGE approach and to preserve a safe work environment. Our mission is to protect the Health and Safety of personnel involved in project operations while minimizing damage caused to the environment by controlling the hazards and impacts.

DC has been thoroughly monitoring all necessary procedures and the relevant implementations by the contractor. Simultaneously, ID explained to all project teams, that by complying with the occupational HSE Regulations, they also need to filter down to all laborers and operators and not only be discussed at the executive level. As a general rule, **safety is everyone's responsibility throughout the project life cycle.**

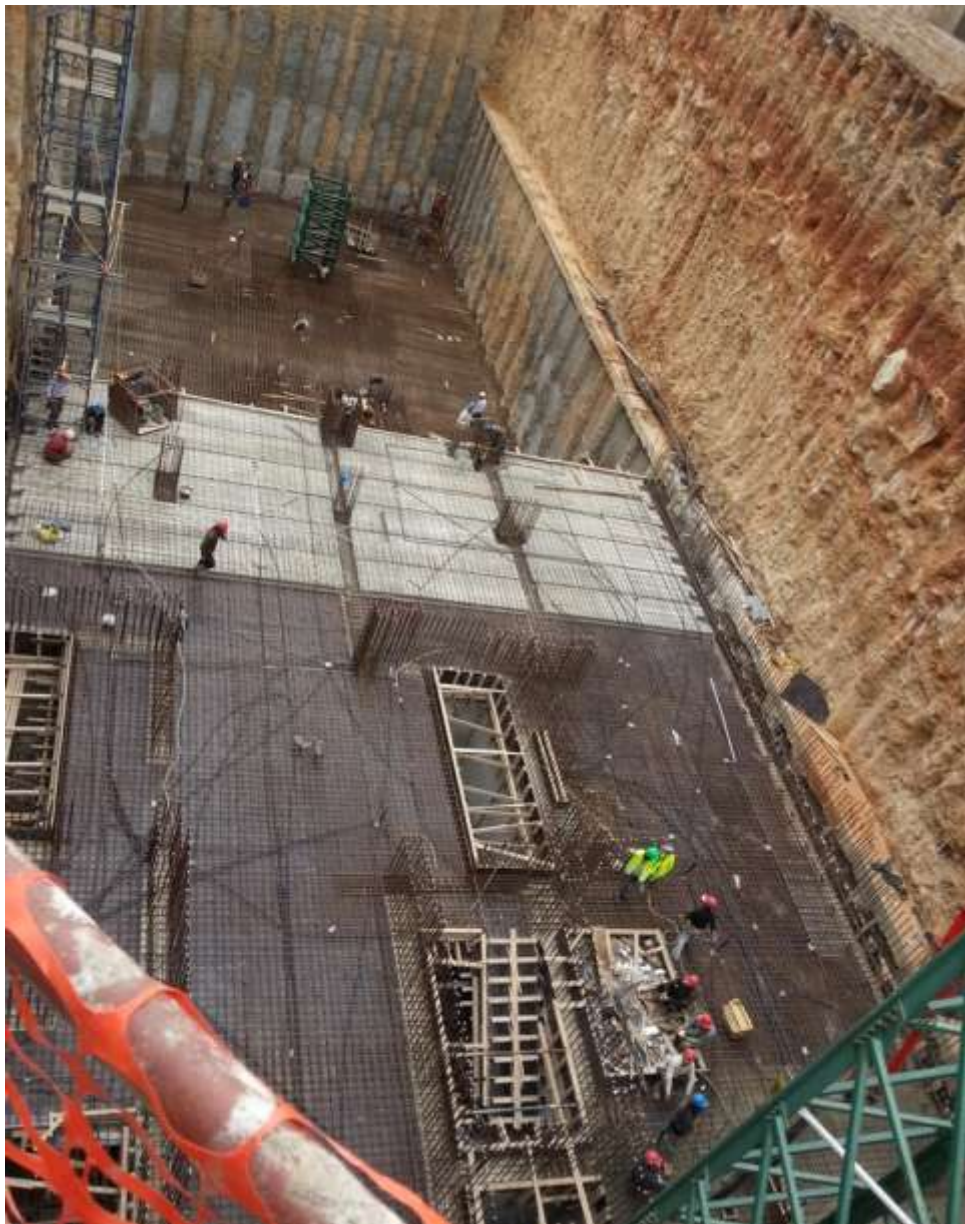
SUMMARY OF HSE REPORT

Safe Work Procedures that are reasonably practicable have been applied for most of the project activities so far and have minimized **the risk of employees' Health, Safety and Environment.**

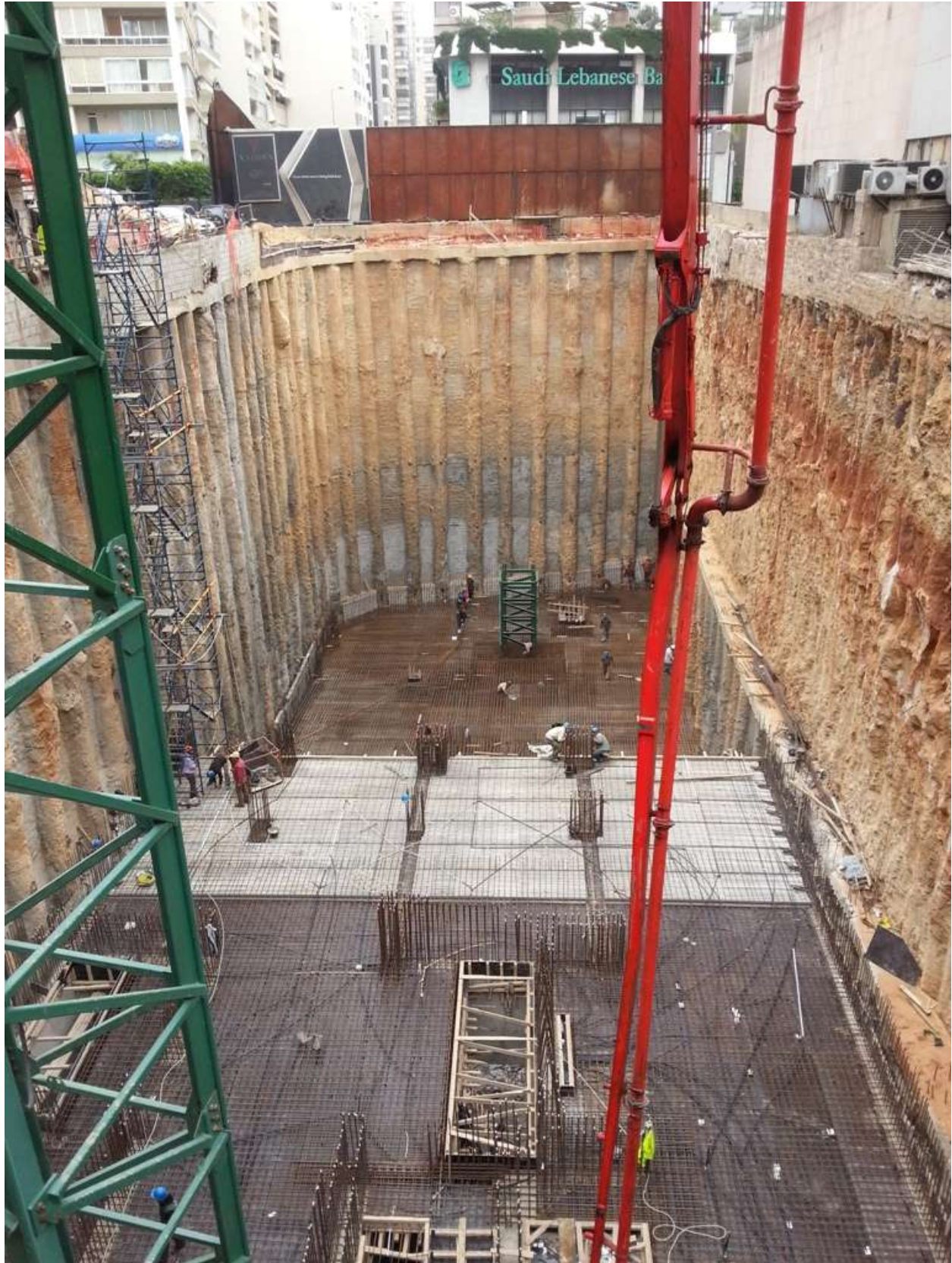
4. PROGRESS PHOTOGRAPHS

The following section provides some indicative idea on progress of works that were conducted by the main contractor.

They are not necessarily demonstrating all activities of works that were carried out during the period of the report.









CONSTRUCTION SITE

MONTHLY HEALTH AND SAFETY INSPECTION CHECK LIST

COMPANY NAME	Dolmen Contracting SAL
SITE NAME	V VERDUN
INSPECTION COMPLETED BY	H&S Coordinator: ahmad chehaitly
DATE	March2013

GENERAL ISSUES	YES	NO	NOTES
The company health and safety policy is available to all.		X	
The Pre Construction Information is available on site.		X	
The Construction Phase Health and Safety Plan is Available on Site.		X	
Risk Assessments /Method Statements have been completed and made available to all parties.		X	
All persons on site have completed a site induction program.		X	
All statutory notices are displayed.		X	
Appropriate site safety signage is in place.		X	
A system is in place to allow all persons on site to raise health and safety issues with management.		X	
All persons on site are aware of the Permit to Work System	X		
There is a system in place to monitor the presence of lone, or out of hour's workers.	X		
EMERGENCY PROCEDURES	YES	NO	NOTES
Risk Assessments /Method Statements have been completed and made available to all parties		X	
Fire action notices are in place		X	Equipment's ordered from the subcontractors on site.
Fire fighting equipment is readily available.		X	Equipment's ordered from the subcontractors on site.
All persons working on site are familiar with the location of this equipment		X	
All persons on site have inducted into the emergency procedures for the site.	X		
Exit routes are clearly marked	X		
Assembly points are clearly marked	X		
Are there sufficient First Aid notices informing staff of how and where to gain First Aid help?		X	First aid ordered from the subcontractors on site.

Clearly displayed notices advise how to contact the emergency services	X		
Is the location of the first aid box clearly signed?		X	
The first aid box suitably stocked and replenished when necessary		X	
SCAFFOLDS			
	YES	NO	NOTES
Risk Assessments /Method Statements have been completed and made available to all parties.		X	
All alterations are carried out and certified by a competent person.	X		
Safe access is available to the scaffold.	X		
Uprights are provided with base plates and sole plates.	X		
All ledgers braces and struts are in position.	X		
The scaffold is secured to minimise the likelihood of collapse.	X		
Guard rails and toe boards have been installed in accordance with best practice.	X		
LADDERS			
	YES	NO	NOTES
Risk Assessments /Method Statements have been completed and made available to all parties		X	
Ladders are secured to prevent slippage.	X		
Ladders extend the correct distance above the working platform.	X		
WORKING AT HEIGHT			
	YES	NO	NOTES
Risk Assessments /Method Statements have been completed and made available to all parties.		X	
There is adequate edge protection.	X		
Harnesses (safety belts) are available and used.	X		
No work is allowed under areas with persons working at height.	X		
Debris protection is in place	X		
Safety nets/air bags are in place.	X		Air bags not existed
EXCAVATIONS			
	YES	NO	NOTES
Risk Assessments /Method Statements have been completed and made available to all parties		X	
Properly designed and maintained support systems are in place.	X		
Safe secure access to the excavation is in place	X		
Sufficient barriers are in place to stop persons accidentally falling into the excavation	X		
The stability of adjacent structures has been considered in relation to excavation work	X		
Plant, materials and spoil are stored away from the excavation to minimise the possibility of collapse	X		
The excavation is inspected and the results recorded by a competent person on a regular basis.	X		
VEHICLES ON SITE			
	YES	NO	NOTES
Risk Assessments /Method Statements have been completed and made available to all parties.		X	
Separate pedestrian and vehicle routes are clearly marked.	X		
One systems and turning areas are provided to minimise the need	X		

for reversing.x			
Vehicles have reversing warning alarms.	X		
The vehicles are properly maintained.	X		
WELFARE	YES	NO	NOTES
Risk Assessments /Method Statements have been completed and made available to all parties		X	
The correct number of toilets are provided and maintained/cleaned.	X		
Hot and cold water is provided to the washing facilities.	X		
Soap and towels are provided.	X		
Correct wet and dirty working clothing is provided.	X		
Changing and drying facilities are provided and maintained.	X		
Drinking water is provided.	X		
Safety boots, helmets and high visibility jackets are provided.	X		Except jackets

ADDITIONAL ITEMS	YES	NO	NOTES

Name	
Date	
Position	
Signature	