

September
2012

SPOT -C-

Progress Report

CONTENTS

1. INTRODUCTION

- a. Introduction
- b. Project brief
- c. Project particulars

2. EXECUTIVE SUMMARY

- a. Project construction main data

3. PROGRESS OVER VIEW

- a. Progress of works

4. PHOTOS

1.

a. INTRODUCTION

The progress report is an assessment that takes place during a project or process, that conveys details such as what sub-goals have been accomplished, what resources have been expended, what problems have been encountered, and whether the project or process is expected to be completed on time and within budget.

It is intended to be a proactive decision- making document; a separate section on actions and alerts has been highlighted for each action along the due dates.

This report also provides a streamlined analysis of the actual, planned and forecasted events of the project.

The executive summary will provide brief information on the project status.

The general progress overview will provide details on progress achieved to date on the project. The progress that is reported encompasses time, cost, quality, risk, scope, procurement, resources, and safety management.

b. PROJECT BRIEF

Function: Shopping center

Built up area: 125500 sq. m.

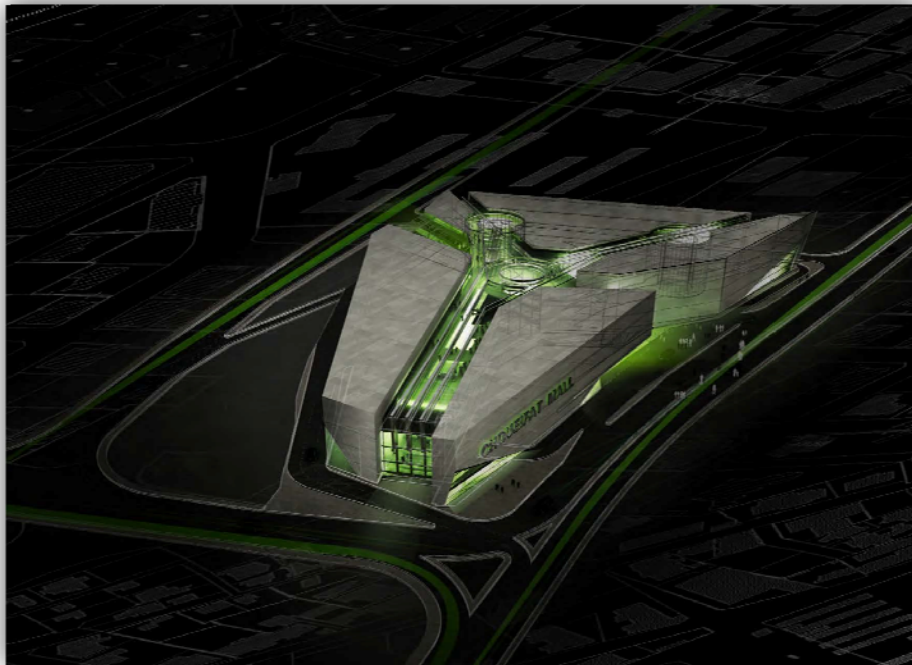
Location: Choueifat, Lebanon

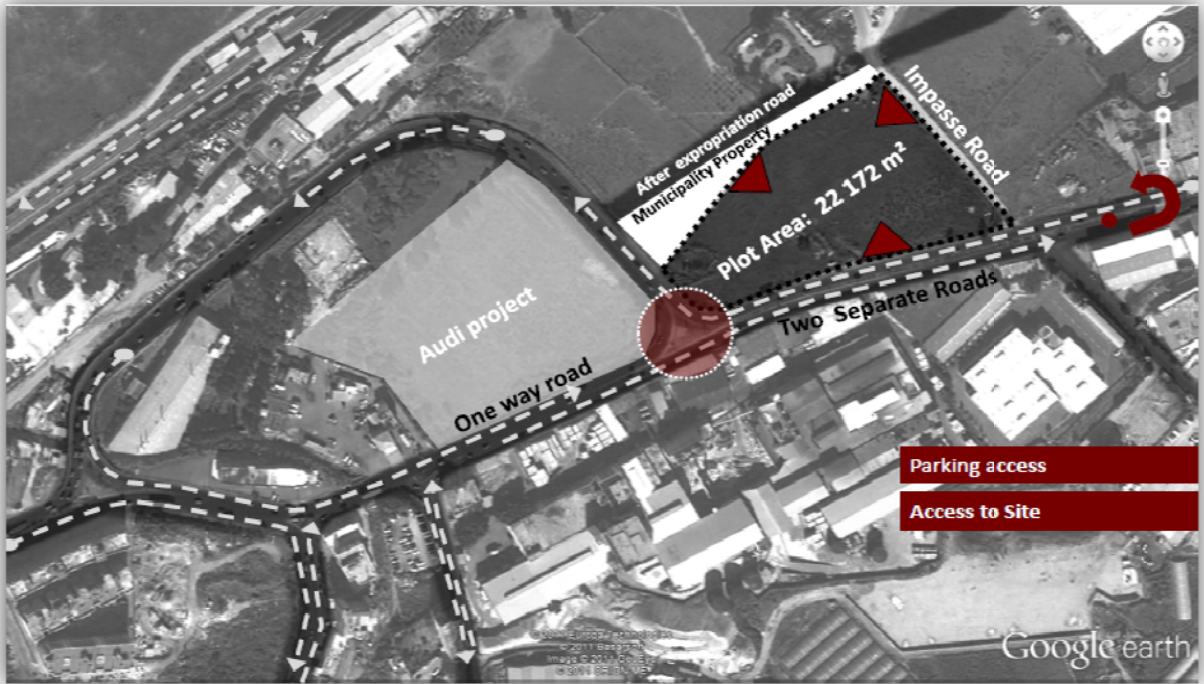
The concept was to create a well organized circulation space based on 3 axis intersected on the main plaza. The evolution of these axis gave rise to the final shape of the building (by dividing the main shape into 4 volumes).

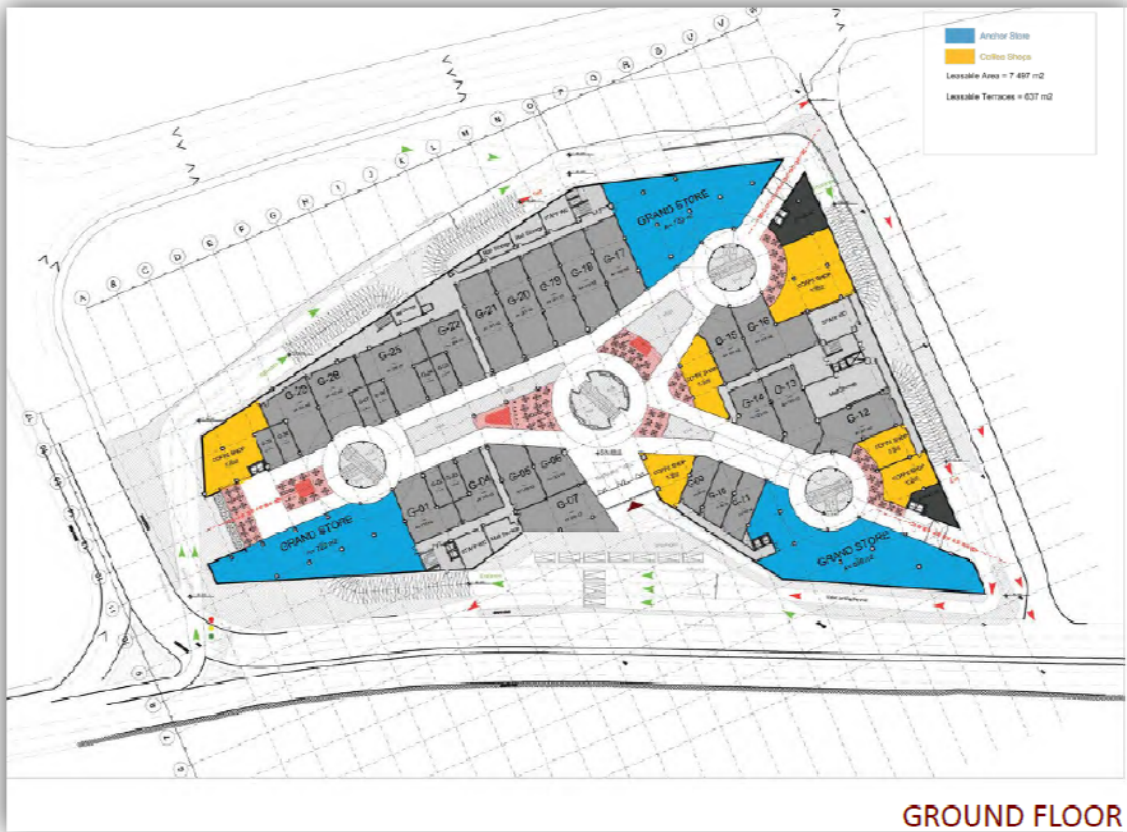
The complex consists of:

- a. Retail spaces.
- b. Cinemas space.
- c. Amusement center.
- d. Terraces.

Below are some views of the project' s exterior views:

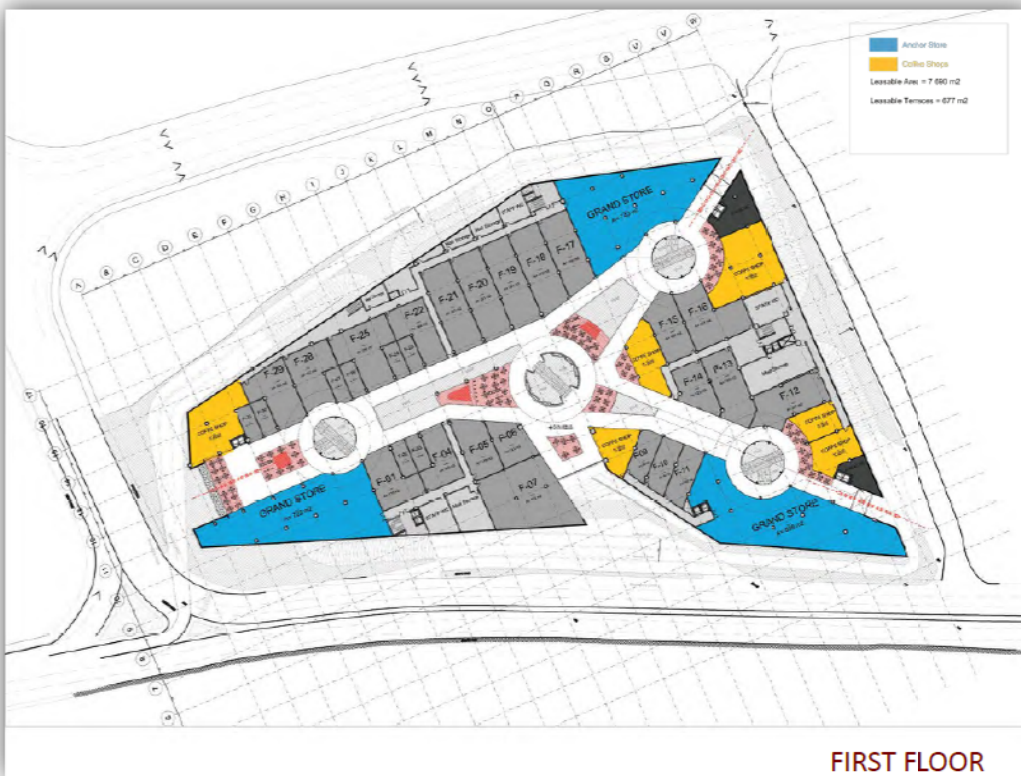




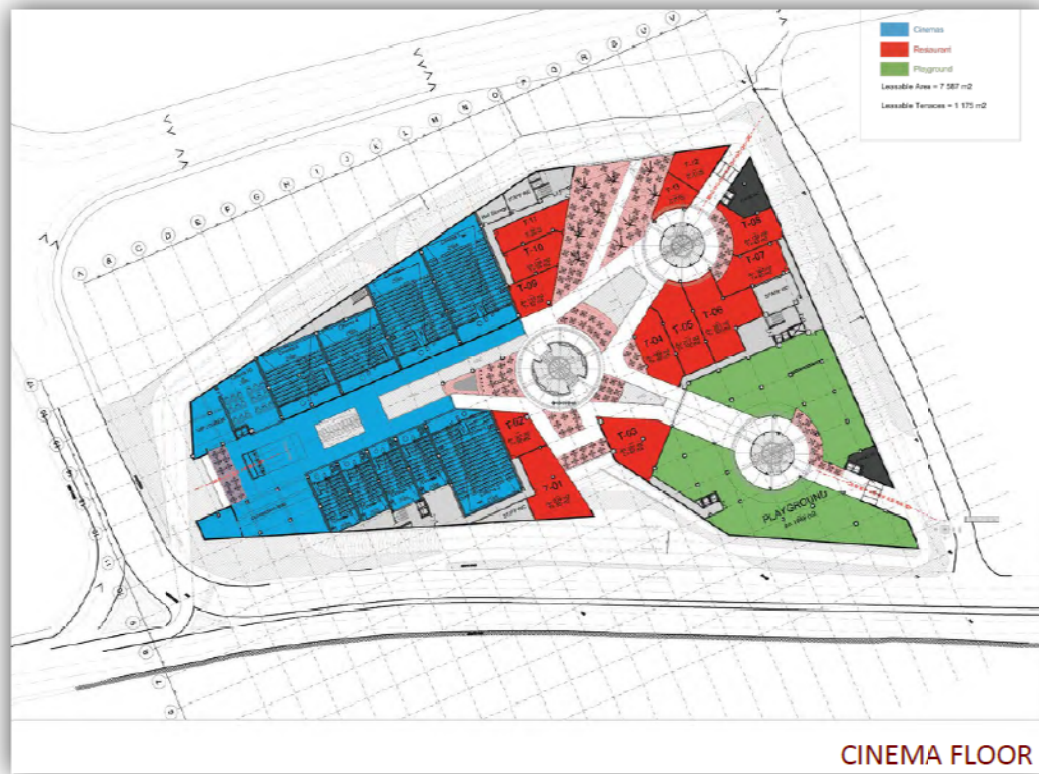




B1



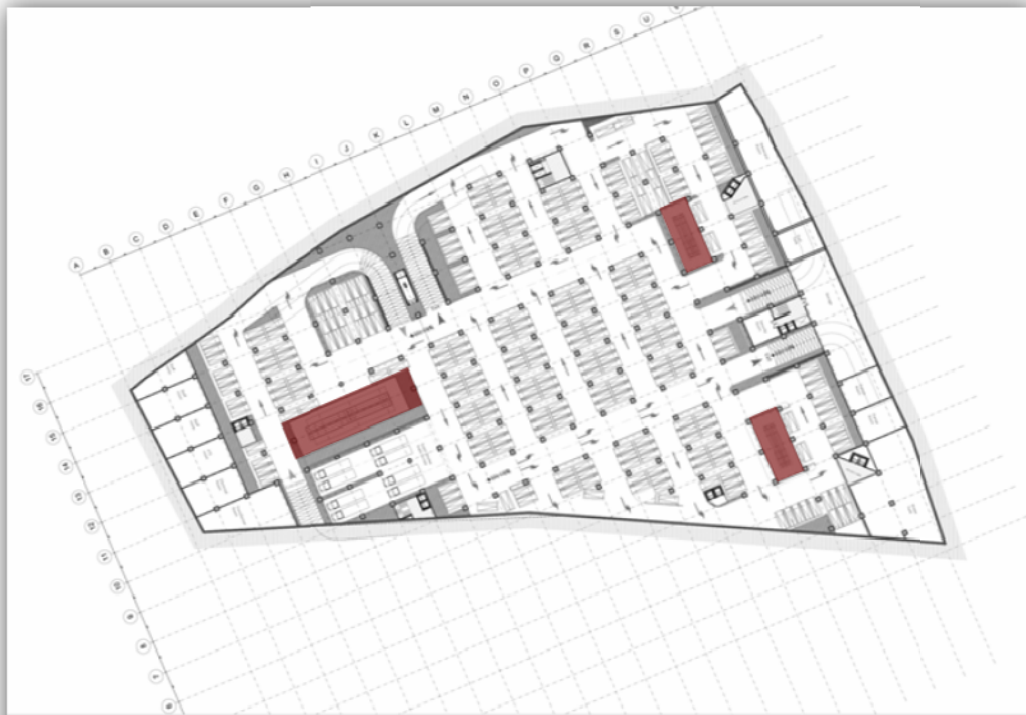
FIRST FLOOR





Each Basement: 391 Car

B5-B4-B3



Second Basement: 287 Car

B2

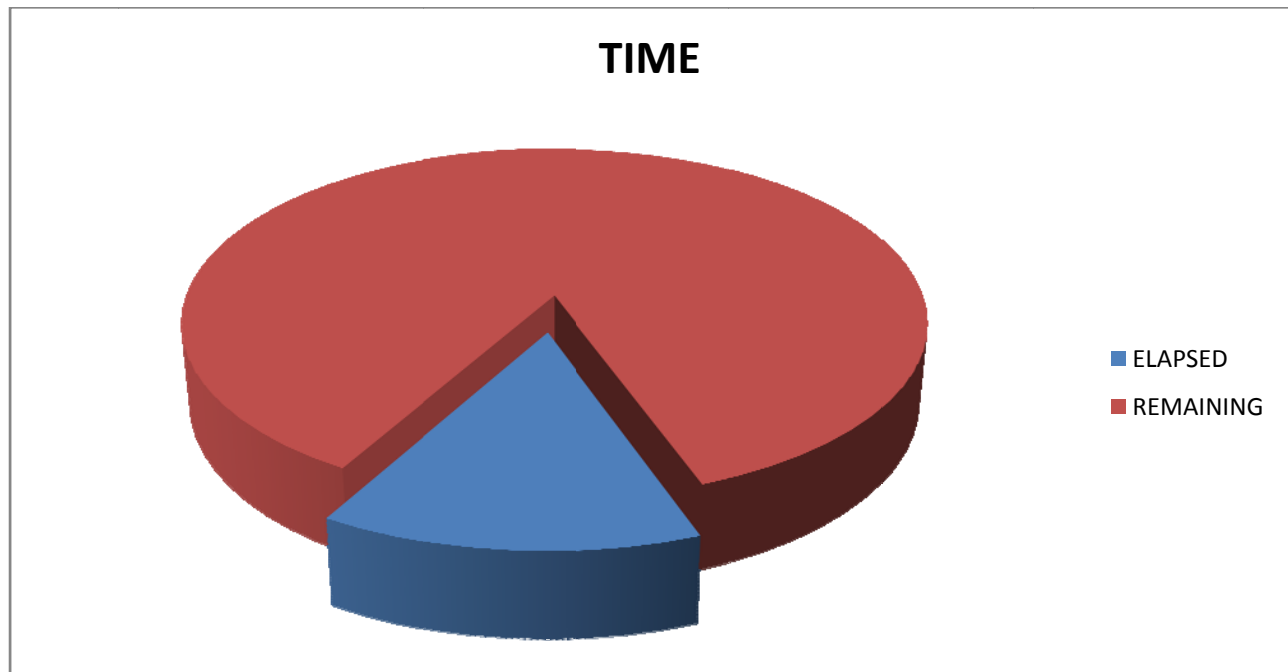
c. PROJECT PARTICULARS

Project Title:	Choueifat Mall	CM
Location:	Choueifat, Lebanon	
Developer:	B.A. Choueifat	BA
Main Contractor:	Dolmen contracting	DC
Shoring subcontractor-1	DST	DST
Shoring subcontractor-2	MGM	MGM
Consultant	DNA	DNA
Technical Control	Socotec	STC
Building Materials Consultant	3PE-3rd Party Engineering	3PE

2. EXECUTIVE SUMMARY

PROJECT CONSTRUCTION MAIN DATA

Project Start Date	January 2012
Project Finish Date (preliminary)	December 2015
Project Duration	1445
Days Elapsed	199
Percentage Of days elapsed	13.7 %



3. PROGRESS OF WORKS

Subcontractor	description	Work completed	Comment
H. Salman	Excavation	90%	Estimated completion date November 2012
DST	Shoring system	85%	Estimated completion date October 2012,
MGM	Shoring system	85%	Estimated completion date October 2012,

4. PHOTOS

The following section provides some indicative idea on progress of works that were conducted by the main contractor.

They are not necessarily demonstrating all activities of works that were carried out during the period of the report.































CONSTRUCTION SITE

MONTHLY HEALTH AND SAFETY INSPECTION CHECK LIST




COMPANY NAME	Dolmen Contracting SAL
SITE NAME	Chewayfet Mall
INSPECTION COMPLETED BY	H&S Coordinator: Ahmad Chehaitly
DATE	September 2012

GENERAL ISSUES	YES	NO	NOTES
The company health and safety policy is available to all.		X	Company policy will be available next month.
The Pre Construction Information is available on site.		X	Construction information given on job.
The Construction Phase Health and Safety Plan is Available on Site.		X	
Risk Assessments /Method Statements have been completed and made available to all parties.		X	
All persons on site have completed a site induction program.		X	
All statutory notices are displayed.		X	
Appropriate site safety signage is in place.	X		
A system is in place to allow all persons on site to raise health and safety issues with management.		X	
All persons on site are aware of the Permit to Work System	X		
There is a system in place to monitor the presence of lone, or out of hour's workers.		X	
EMERGENCY PROCEDURES			
Risk Assessments / Method Statements have been completed and made available to all parties		X	
Fire action notices are in place	x		
Fire fighting equipment is readily available.		X	
All persons working on site are familiar with the location of this equipment		X	
All persons on site have inducted into the emergency procedures for the site.		X	
Exit routes are clearly marked	x		
Assembly points are clearly marked		X	
Are there sufficient First Aid notices informing staff of how and where to gain First Aid help?	x		
Clearly displayed notices advise how to contact the emergency services		X	
Is the location of the first aid box clearly signed?	x		

The first aid box suitably stocked and replenished when necessary	X		
SCAFFOLDS			
Risk Assessments / Method Statements have been completed and made available to all parties.		X	
All alterations are carried out and certified by a competent person.		X	
Safe access is available to the scaffold.		X	
Uprights are provided with base plates and sole plates.		X	
All ledgers braces and struts are in position.		X	
The scaffold is secured to minimise the likelihood of collapse.		X	
Guard rails and toe boards have been installed in accordance with best practice.		X	
LADDERS			
Risk Assessments / Method Statements have been completed and made available to all parties		X	
Ladders are secured to prevent slippage.		X	
Ladders extend the correct distance above the working platform.		X	
WORKING AT HEIGHT			
Risk Assessments / Method Statements have been completed and made available to all parties.		X	
There is adequate edge protection.		X	
Harnesses (safety belts) are available and used.		X	
No work is allowed under areas with persons working at height.		X	
Debris protection is in place		X	
Safety nets/air bags are in place.		X	
EXCAVATIONS			
Risk Assessments / Method Statements have been completed and made available to all parties	X		
Properly designed and maintained support systems are in place.	X		
Safe secure access to the excavation is in place	X		
Sufficient barriers are in place to stop persons accidentally falling into the excavation	X		
The stability of adjacent structures has been considered in relation to excavation work	X		
Plant, materials and spoil are stored away from the excavation to minimise the possibility of collapse	X		
The excavation is inspected and the results recorded by a competent person on a regular basis.	X		
VEHICLES ON SITE			
Risk Assessments / Method Statements have been completed and made available to all parties.		X	
Separate pedestrian and vehicle routes are clearly marked.	X		
One systems and turning areas are provided to minimise the need for reversing.	X		
Vehicles have reversing warning alarms.	X		
The vehicles are properly maintained.	X		

WELFARE	YES	NO	NOTES
Risk Assessments / Method Statements have been completed and made available to all parties	X		
The correct number of toilets are provided and maintained/cleaned.	X		
Hot and cold water is provided to the washing facilities.	X		
Soap and towels are provided.	X		
Correct wet and dirty working clothing is provided.		X	
Changing and drying facilities are provided and maintained.	X		
Drinking water is provided.	X		
Safety boots, helmets and high visibility jackets are provided.	X		

ADDITIONAL ITEMS	YES	NO	NOTES

Description/Location	proposed solution	comment	PHOTOS
<p>Laborer on site not wearing helmet,gloves and safety boot.</p>	<p>Usage of PPE.</p>	<p>Pending due to DST not provided PPE for laborers yet.</p>	
<p>Not wearing the goggles.</p>	<p>Usage of goggles.</p>	<p>Goggles used.</p>	
<p>Laborer on site without helmet and wearing flip-flops .</p>	<p>Usage of ppe.</p>	<p>PPE used.</p>	
<p>Foreman on site for DST not wearing helmet and safety boot.</p>	<p>Usage of PPE.</p>	<p>Pending due to DST not provided PPE for laborers yet.</p>	