

June  
**2012**

# SPOT -C-

## Progress Report

## CONTENTS

### 1. INTRODUCTION

- a. Introduction
- b. Project brief
- c. Project particulars

### 2. EXECUTIVE SUMMARY

- a. Project construction main data

### 3. PROGRESS OVER VIEW

- a. Progress of works

### 4. PHOTOS

# 1.

## a. INTRODUCTION

The progress report is an assessment that takes place during a project or process, that conveys details such as what sub-goals have been accomplished, what resources have been expended, what problems have been encountered, and whether the project or process is expected to be completed on time and within budget.

It is intended to be a proactive decision- making document; a separate section on actions and alerts has been highlighted for each action along the due dates.

This report also provides a streamlined analysis of the actual, planned and forecasted events of the project.

The executive summary will provide brief information on the project status.

The general progress overview will provide details on progress achieved to date on the project. The progress that is reported encompasses time, cost, quality, risk, scope, procurement, resources, and safety management.

## b. PROJECT BRIEF

**Function:** Shopping center

**Built up area:** 125500 sq. m.

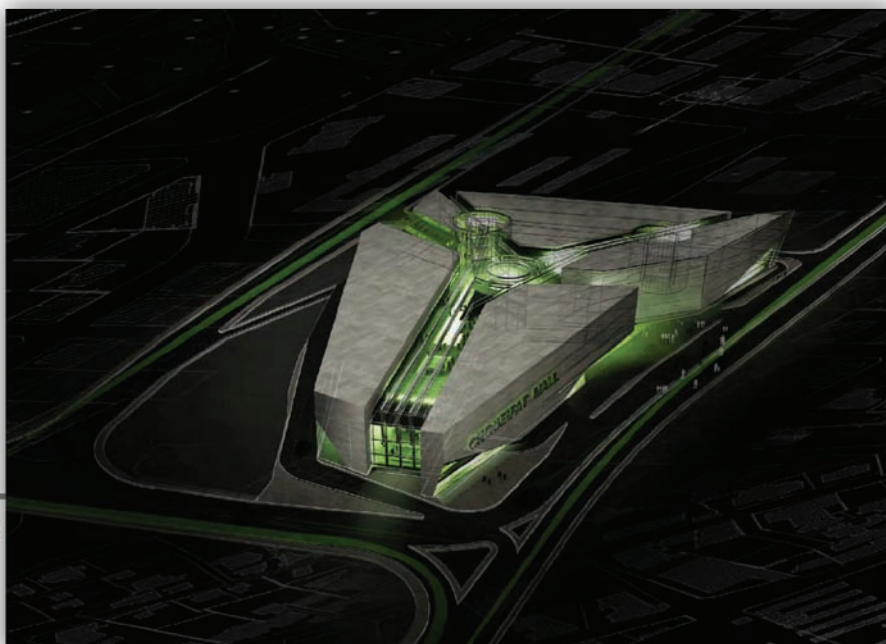
**Location:** Choueifat, Lebanon

The concept was to create a well organized circulation space based on 3 axis intersected on the main plaza. The evolution of these axis gave rise to the final shape of the building (by dividing the main shape into 4 volumes).

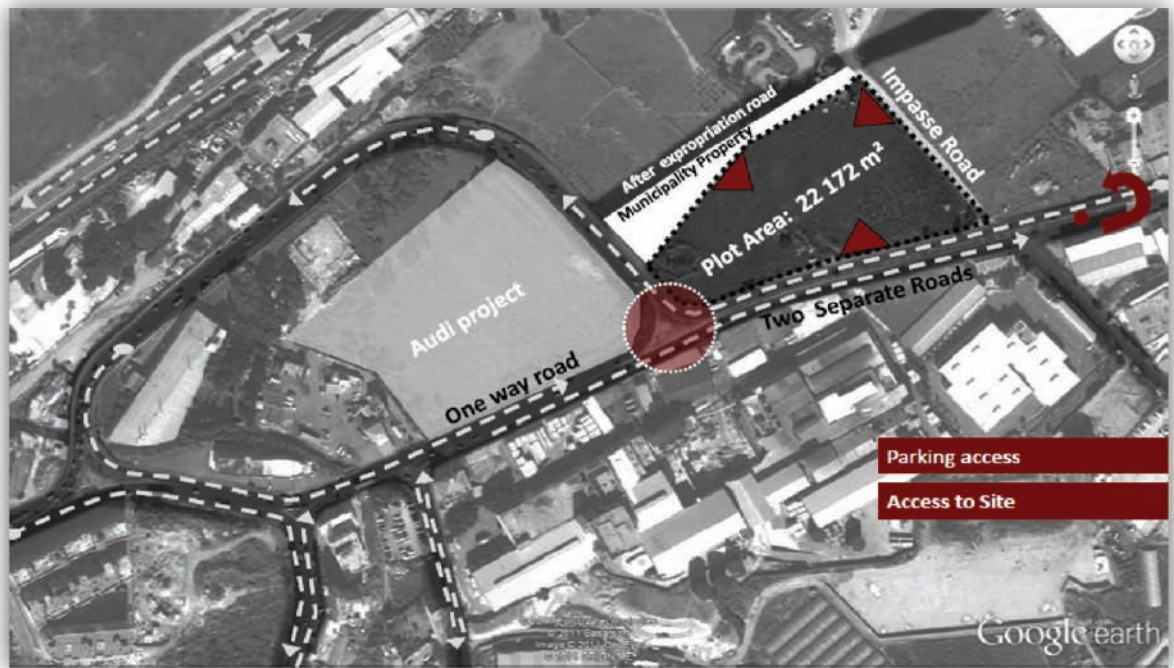
The complex consists of:

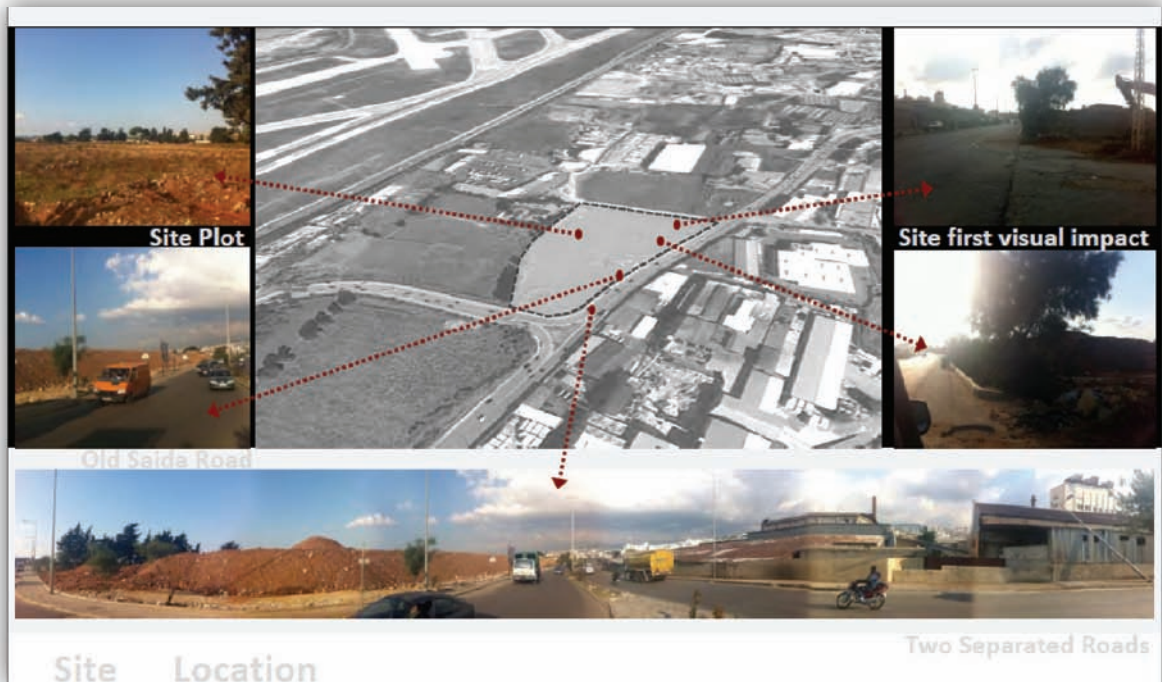
- a. Retail spaces.
- b. Cinemas space.
- c. Amusement center.
- d. Terraces.

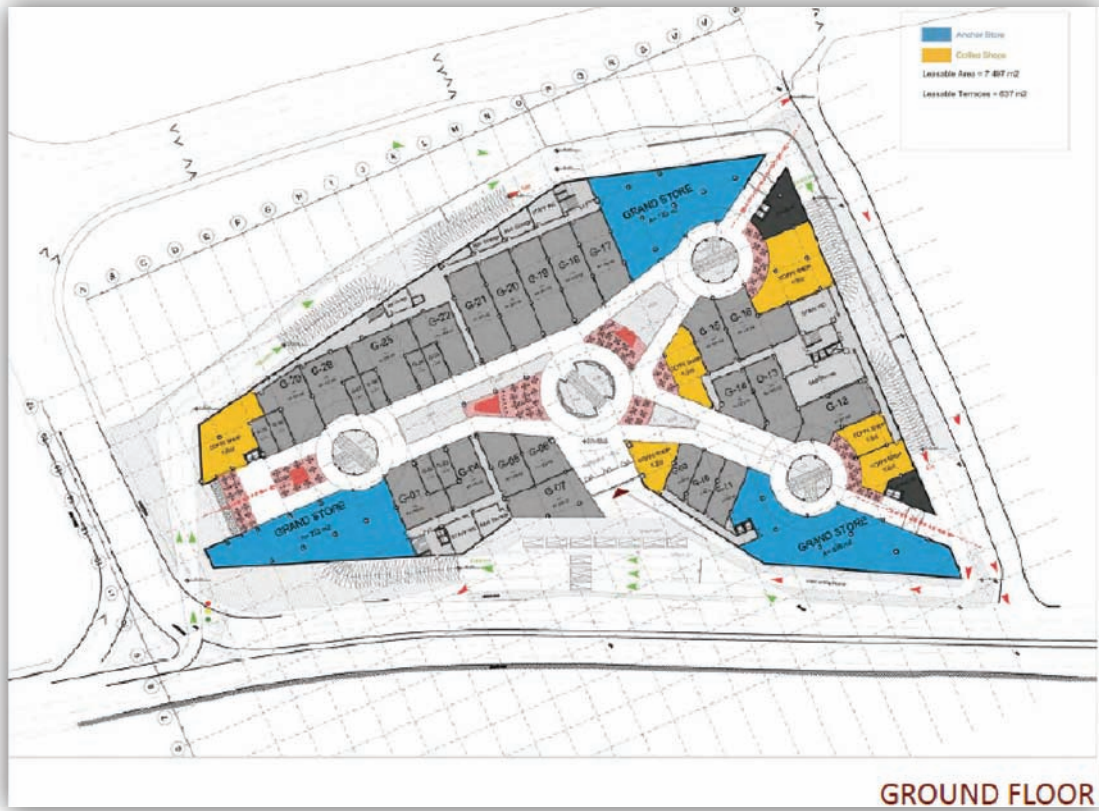
of

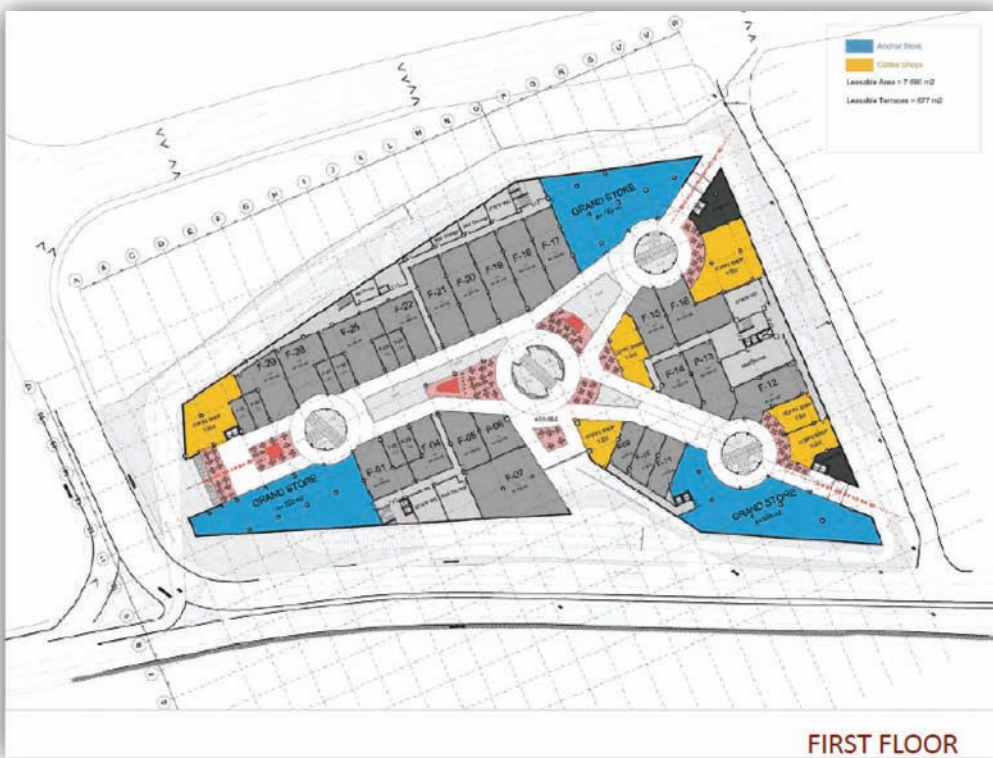


Below are some views of the project's exterior views:

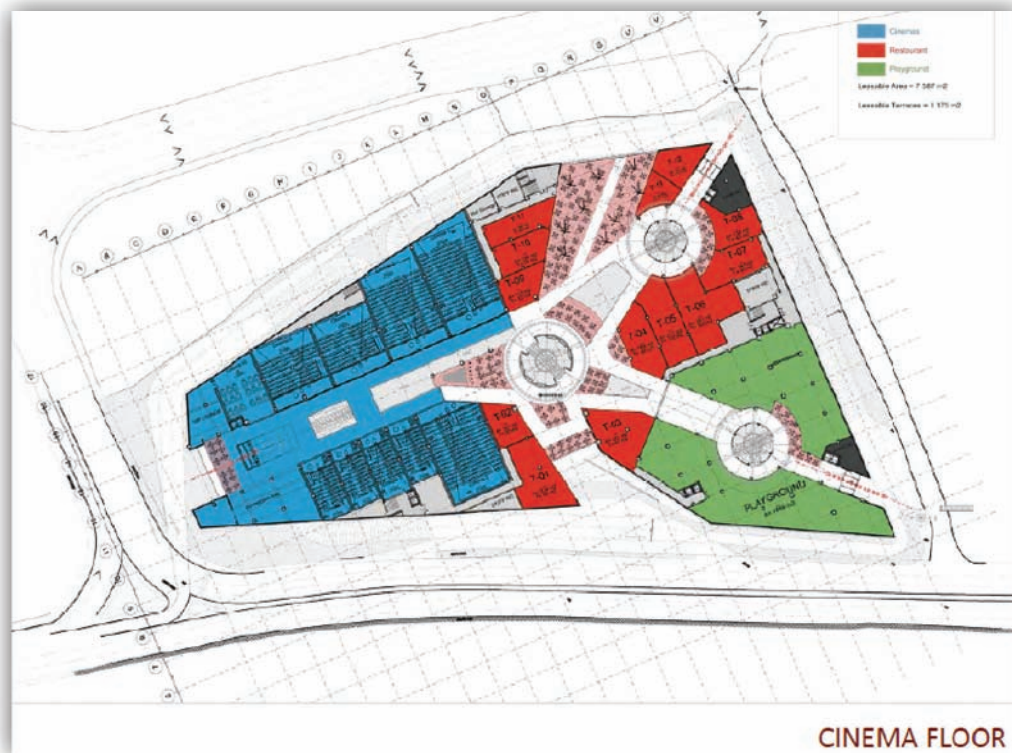
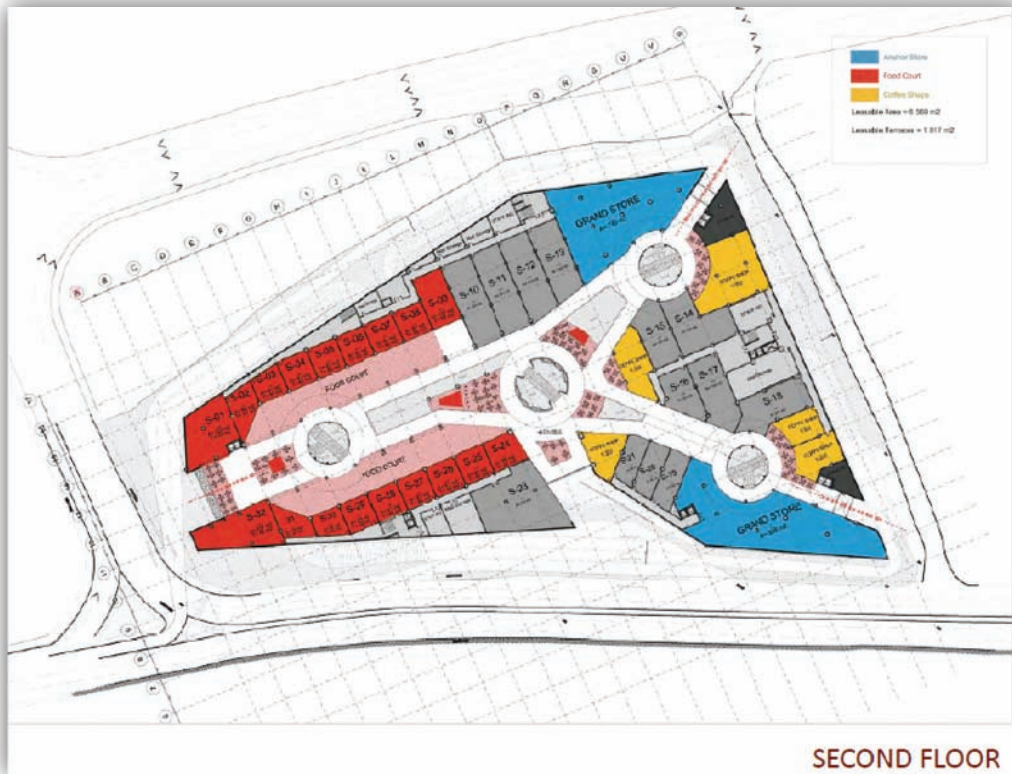


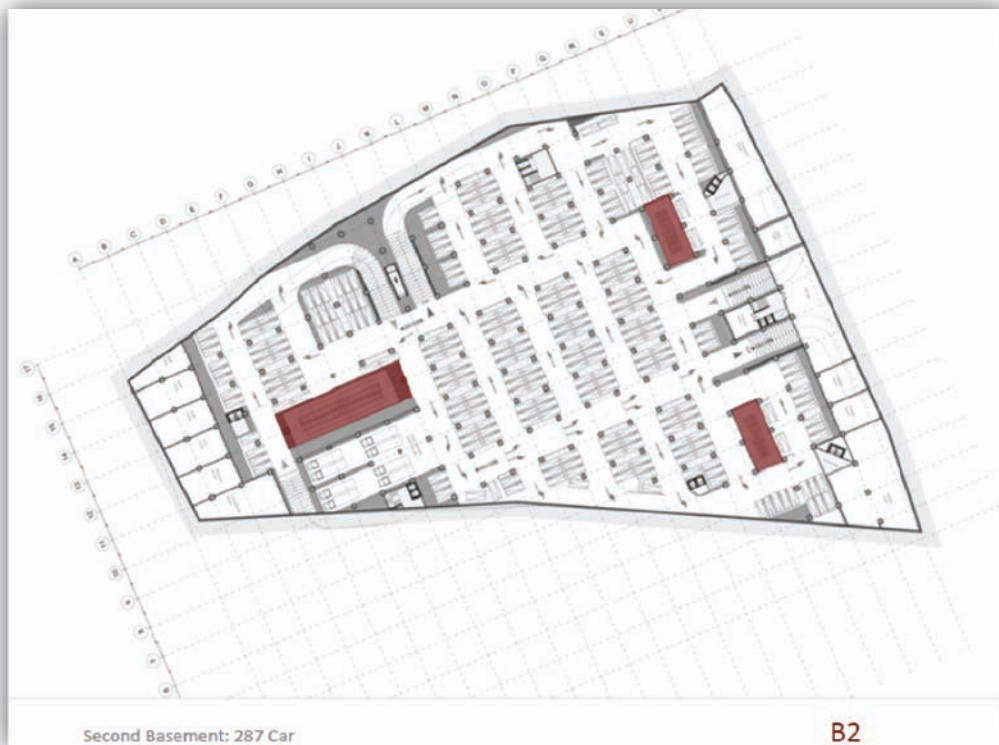
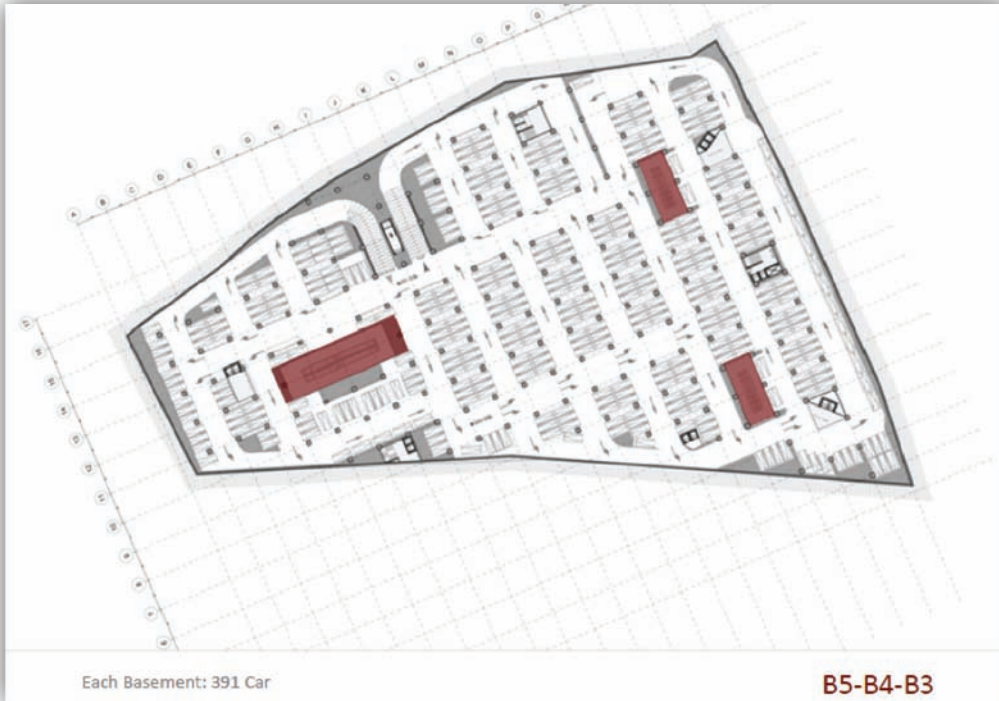












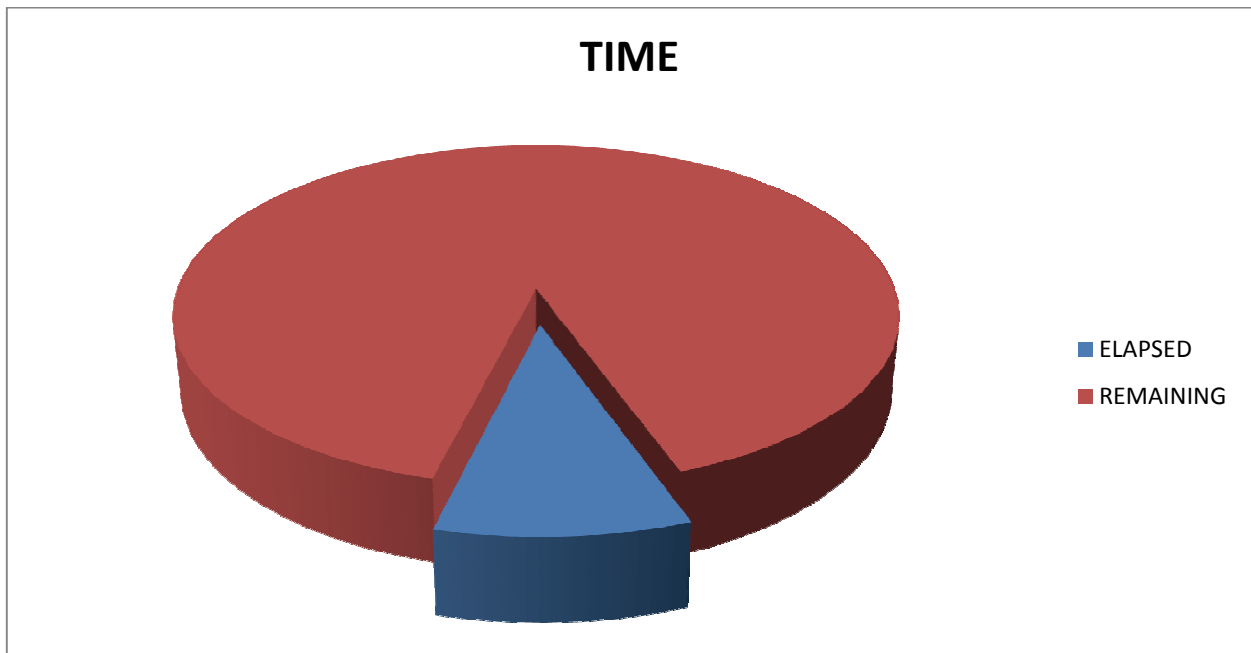
## c. PROJECT PARTICULARS

<b>Project Title:</b>	<b>Choueifat Mall</b>	<b>CM</b>
<b>Location:</b>	<b>Choueifat, Lebanon</b>	
<b>Developer:</b>	<b>B.A. Choueifat</b>	<b>BA</b>
<b>Main Contractor:</b>	<b>Dolmen contracting</b>	<b>DC</b>
<b>Shoring subcontractor-1</b>	<b>DST</b>	<b>DST</b>
<b>Shoring subcontractor-2</b>	<b>MGM</b>	<b>MGM</b>
<b>Consultant</b>	<b>DNA</b>	<b>DNA</b>
<b>Technical Control</b>	<b>Socotec</b>	<b>STC</b>
<b>Building Materials Consultant</b>	<b>3PE-3<sup>rd</sup> Party Engineering</b>	<b>3PE</b>

## 2. EXECUTIVE SUMMARY

### PROJECT CONSTRUCTION MAIN DATA

<b>Project Start Date</b>	January 2012
<b>Project Finish Date (preliminary)</b>	December 2015
<b>Project Duration</b>	1445
<b>Days Elapsed</b>	138
<b>Percentage Of days elapsed</b>	9.5 %



### 3. PROGRESS OF WORKS

Subcontractor	description	Work completed	Comment
<b>H. Salman</b>	Excavation	65%	Estimated completion date November 2012
<b>DST</b>	Shoring system	20%	Estimated completion date October 2012,
<b>MGM</b>	Shoring system	20%	Estimated completion date October 2012,

## 4. PHOTOS

The following section provides some indicative idea on progress of works that were conducted by the main contractor.

They are not necessarily demonstrating all activities of works that were carried out during the period of the report.



















