



December
2013

PATRIARCAT 482

Progress Report

DOLMEN
contracting

CONTENTS

1. INTRODUCTION
 - a. Introduction
 - b. Project brief
 - c. Project particulars

2. EXECUTIVE SUMMARY
 - a. Project construction main data

3. PROGRESS OVER VIEW
 - a. Progress of works
 - b. Safety Management

4. PHOTOS

1.

a. INTRODUCTION

The progress report is an assessment that takes place during a project or process, that conveys details such as what sub-goals have been accomplished, what resources have been expended, what problems have been encountered, and whether the project or process is expected to be completed on time and within budget.

It is intended to be a proactive decision- making document; a separate section on actions and alerts has been highlighted for each action along the due dates.

This report also provides a streamlined analysis of the actual, planned and forecasted events of the project.

The executive summary will provide brief information on the project status.

The general progress overview will provide details on progress achieved to date on the project. The progress that is reported encompasses time, cost, quality, risk, scope, procurement, resources, and safety management.

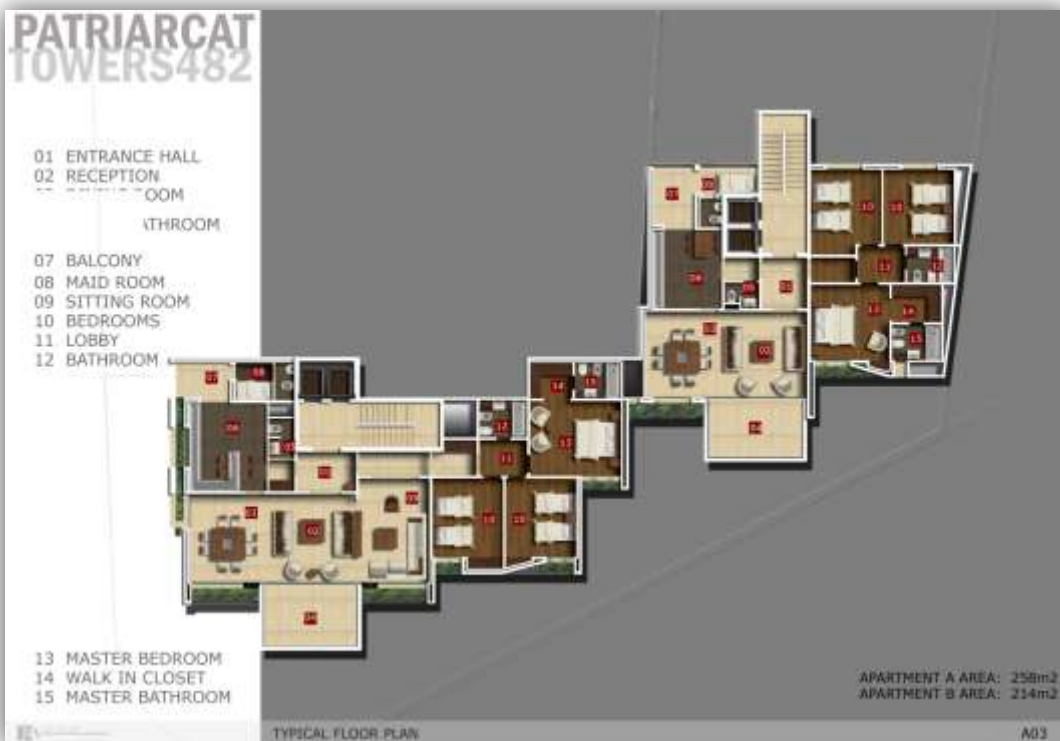
b. PROJECT BRIEF

PATRIARCAT RESIDENCE 482 (PR), is located in the prestigious location of Batrakiyeh in Beirut city. Its proximity to Solidere, Verdun, Hamra and Achrafieh is one of its biggest assets, as they are easily reached and the Rafic Hariri International Airport is **less than 15 minutes away via the highway. All of Beirut' s amenities and all of Lebanon are readily accessible to Patriarcats Tower' s residents.**

Below are some views of the project' s exterior and interior views:









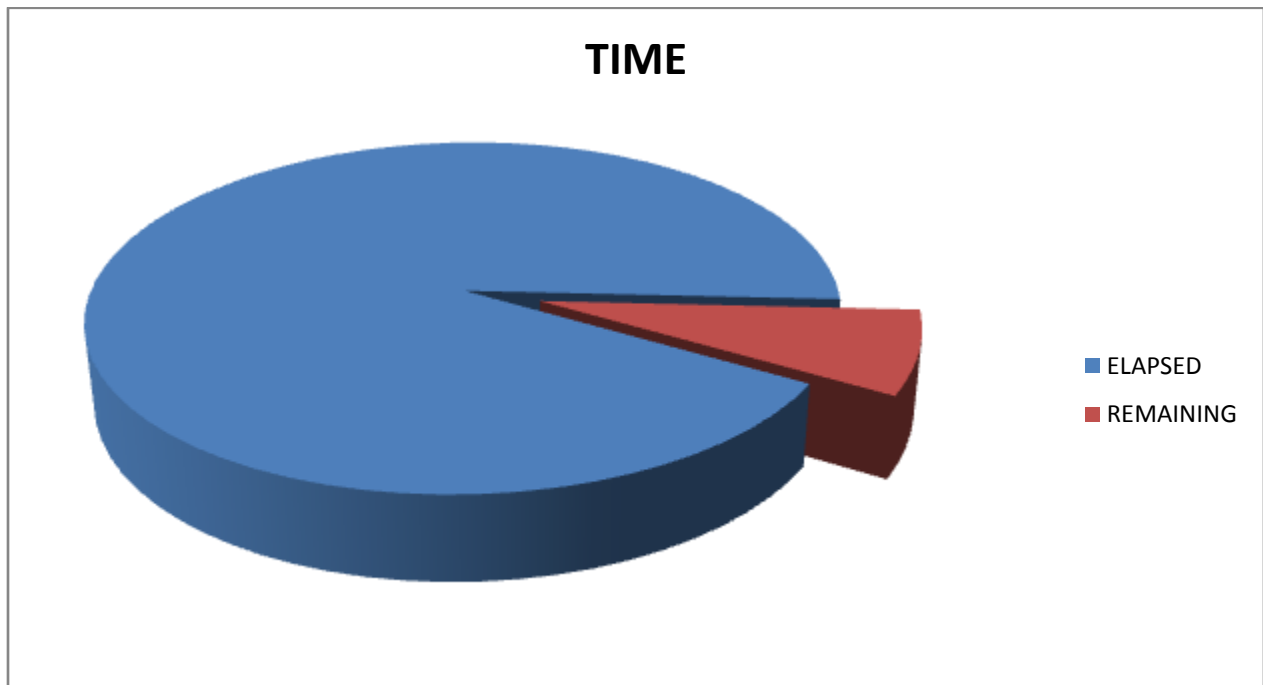
c. PROJECT PARTICULARS

Project Title:	Patriarcat Residence 482	PR
Location:	Beirut, Lebanon	
Developer:	BMI SAL	BMI
Main Contractor:	Dolmen Contracting	DC
Consultant:	MN- Line Architects	MNL
MEP Subcontractor:	AlBonian Group	BG

2. EXECUTIVE SUMMARY

a. Project Construction Main Data

Project name	
Project Budget	4,500,000 \$
Project Start Date	October 2011
Project Finish Date	December 2013
Project Duration	820 days
Days Elapsed	758 days
Percentage Of days elapsed	92 %



3. PROGRESS OVERVIEW

a. Progress of Works

FLR	DIVISION	TASK	BLOCK A	BLOCK B	COMMENTS
Basement 2	Concrete Works	Columns	100%	100%	
		Slabs	100%	100%	
	Finishes	Masonry	100%	100%	
		Lintels and jambs	100%	100%	
		Wood works - subframes	0%	0%	
		Metal works - subframes	0%	0%	
		Plastering	80%	80%	
		Paint - ceilings	0%	0%	
		Floors tiling	0%	0%	
		Paint works – putty+primer	0%	0%	
		Metal works - doors & windows	0%	0%	
		Wood works - joinery & doors	0%	0%	
		Wood works -	0%	0%	
		Polishing works	0%	0%	
		Paint works - final coat	0%	0%	
		Epoxy - final coat	0%	0%	
	MEP	Drainage system UPVC	40%	40%	
		Duct installation	0%	0%	
		Cables and wires pulling	40%	40%	
		Fans	0%	0%	
		Tanks	0%	0%	
		Pumps	0%	0%	
		Wiring devices installation	40%	40%	
Lighting fixtures installation		10%	10%		
Panel Board installation		10%	10%		
Mechanical functional test		0%	0%		
Electrical functional test	0%	0%			

Basement 1	Concrete Works	Columns	100%	100%	
		Slabs	100%	100%	
	Finishes	Masonry	0%	0%	
		Lintels and jambs	0%	0%	
		Wood works - subframes	0%	0%	
		Metal works - subframes	0%	0%	
		Plastering	80%	80%	
		Paint - ceilings	0%	0%	
		Floors tiling	0%	0%	
		Paint works – putty+primer	0%	0%	
		Metal works - doors & windows	0%	0%	
		Wood works - joinery & doors	0%	0%	
		Wood works -	0%	0%	
		Polishing works	0%	0%	
		Paint works - final coat	0%	0%	
	Epoxy - final coat	0%	0%		
	MEP	Drainage system UPVC	40%	40%	
		Duct installation	0%	0%	
		Cables and wires pulling	0%	0%	
		Fans	0%	0%	
Wiring devices installation		10%	10%		
Lighting fixtures installation		10%	10%		
Panel Board installation		0%	0%		
Mechanical functional test		0%	0%		
Electrical functional test	0%	0%			

Ground Floor	Concrete Works	Columns	100%	100%	
		Slabs	100%	100%	
	Finishes	Masonry	50%	50%	
		Lintels and jambs	80%	50%	
		Wood works - subframes	0%	0%	
		Metal works - subframes	0%	0%	
		Plastering	60%	50%	
		Paint - ceilings	0%	0%	
		Walls tiling (WCs and Kitchen)	0%	0%	
		Waterproofing - wet areas	0%	0%	
		False Ceilings	0%	0%	
		Floors tiling	0%	0%	
		Paint works – putty+primer	0%	0%	
		Metal works - doors & windows	0%	0%	
		Wood works - joinery & doors	0%	0%	
		Wood works - kitchens & closets	0%	0%	
		Polishing works	0%	0%	
	Paint works - final coat	0%	0%		
	Epoxy - final coat	0%	0%		
	MEP	Drainage system UPVC	50%	50%	
		PPR - wet areas	20%	20%	
		GS - dry areas	0%	0%	
		Duct installation	20%	20%	
		Cables and wires pulling	50%	50%	
		Fans	0%	0%	
		Tanks	0%	0%	
		Pumps	0%	0%	
Sanitary fixtures installation		0%	0%		
Wiring devices installation		40%	40%		
Lighting fixtures installation		0%	0%		
Panel Board installation		0%	0%		
Mechanical functional test	0%	0%			
Electrical functional test	0%	0%			

1st Floor	Concrete Works	Columns	100%	100%	
		Slabs	100%	100%	
	Finishes	Masonry	100%	100%	
		Lintels and jambs	100%	100%	
		Wood works - subframes	100%	100%	
		Metal works - subframes	100%	80%	
		Plastering	100%	100%	
		Paint - ceilings	100%	80%	
		Walls tiling (WCs and Kitchen)	100%	80%	
		Waterproofing - wet areas	100%	90%	
		False Ceilings	100%	50%	
		Floors tiling	100%	50%	
		Paint works – putty+primer	100%	90%	
		Metal works - doors & windows	100%	50%	
		Wood works - joinery & doors	100%	50%	
		Wood works - kitchens & closets	100%	50%	
		Polishing works	100%	0%	
	Paint works - final coat	100%	0%		
	Epoxy - final coat	100%	0%		
	MEP	Drainage system UPVC	100%	70%	
		PPR - wet areas	100%	90%	
		GS - dry areas	100%	60%	
		Duct installation	100%	100%	
		Cables and wires pulling	100%	90%	
		Fans	100%	10%	
		Sanitary fixtures installation	100%	10%	
		Wiring devices installation	100%	80%	
Lighting fixtures installation		100%	10%		
Panel Board installation		100%	10%		
Mechanical functional test		100%	50%		
Electrical functional test		100%	0%		

2nd Floor	Concrete Works	Columns	100%	100%	
		Slabs	100%	100%	
	Finishes	Masonry	100%	100%	
		Lintels and jambs	100%	100%	
		Wood works - subframes	100%	100%	
		Metal works - subframes	80%	80%	
		Plastering	100%	100%	
		Paint - ceilings	40%	40%	
		Floors grinding	40%	40%	
		Walls tiling (WCs and Kitchen)	80%	80%	
		Waterproofing - wet areas	80%	80%	
		False Ceilings	80%	80%	
		Floors tiling	80%	80%	
		Paint works – putty+primer	50%	50%	
		Metal works - doors & windows	0%	0%	
		Wood works - joinery & doors	50%	50%	
		Wood works - kitchens & closets	0%	0%	
		Polishing works	0%	0%	
		Paint works - final coat	0%	0%	
		Epoxy - final coat	0%	0%	
	MEP	Drainage system UPVC	70%	70%	
		PPR - wet areas	50%	50%	
		GS - dry areas	50%	50%	
		Duct installation	100%	100%	
		Cables and wires pulling	80%	80%	
		Fans	10%	10%	
		Sanitary fixtures installation	10%	10%	
Wiring devices installation		60%	60%		
Lighting fixtures installation		40%	40%		
Panel Board installation		0%	0%		
Mechanical functional test		0%	0%		
Electrical functional test	0%	0%			

3rd Floor	Concrete Works	Columns	100%	100%	
		Slabs	100%	100%	
	Finishes	Masonry	100%	100%	
		Lintels and jambs	100%	100%	
		Wood works - subframes	100%	100%	
		Metal works - subframes	0%	0%	
		Plastering	100%	100%	
		Paint - ceilings	40%	40%	
		Floors grinding	0%	0%	
		Walls tiling (WCs and Kitchen)	40%	40%	
		Waterproofing - wet areas	80%	80%	
		False Ceilings	50%	50%	
		Floors tiling	80%	80%	
		Paint works – putty+primer	40%	40%	
		Metal works - doors & windows	0%	0%	
		Wood works - joinery & doors	0%	0%	
		Wood works - kitchens & closets	0%	0%	
		Polishing works	0%	0%	
		Paint works - final coat	0%	0%	
		Epoxy - final coat	0%	0%	
	MEP	Drainage system UPVC	80%	80%	
		PPR - wet areas	80%	80%	
		GS - dry areas	80%	80%	
		Duct installation	50%	50%	
		Cables and wires pulling	50%	50%	
		Fans	10%	10%	
		Sanitary fixtures installation	20%	10%	
Wiring devices installation		20%	20%		
Lighting fixtures installation		40%	40%		
Panel Board installation		0%	0%		
Mechanical functional test		40%	40%		
Electrical functional test	0%	0%			

4th Floor	Concrete Works	Columns	100%	100%	
		Slabs	100%	100%	
	Finishes	Masonry	100%	100%	
		Lintels and jambs	100%	100%	
		Wood works - subframes	100%	100%	
		Metal works - subframes	0%	0%	
		Plastering	100%	100%	
		Paint - ceilings	40%	40%	
		Walls tiling (WCs and Kitchen)	0%	0%	
		Waterproofing - wet areas	80%	80%	
		False Ceilings	50%	0%	
		Floors tiling	20%	0%	
		Paint works – putty+primer	20%	20%	
		Metal works - doors & windows	0%	0%	
		Wood works - joinery & doors	0%	0%	
		Wood works - kitchens & closets	0%	0%	
		Polishing works	0%	0%	
		Paint works - final coat	0%	0%	
	Epoxy - final coat	0%	0%		
	MEP	Drainage system UPVC	70%	70%	
		PPR - wet areas	30%	30%	
		GS - dry areas	30%	30%	
		Duct installation	100%	100%	
		Cables and wires pulling	40%	40%	
		Fans	0%	0%	
		Sanitary fixtures installation	0%	0%	
		Wiring devices installation	60%	60%	
Lighting fixtures installation		60%	60%		
Panel Board installation		30%	30%		
Mechanical functional test		60%	60%		
Electrical functional test	0%	0%			

5th Floor	Concrete Works	Columns	100%	100%	
		Slabs	100%	100%	
	Finishes	Masonry	100%	100%	
		Lintels and jambs	100%	100%	
		Wood works - subframes	100%	100%	
		Metal works - subframes	0%	0%	
		Plastering	100%	100%	
		Paint - ceilings	40%	40%	
		Walls tiling (WCs and Kitchen)	0%	0%	
		Waterproofing - wet areas	60%	60%	
		False Ceilings	10%	10%	
		Floors tiling	0%	0%	
		Paint works – putty+primer	50%	50%	
		Metal works - doors & windows	0%	0%	
		Wood works - joinery & doors	0%	0%	
		Wood works - kitchens & closets	0%	0%	
		Polishing works	0%	0%	
		Paint works - final coat	0%	0%	
		Epoxy - final coat	0%	0%	
	MEP	Drainage system UPVC	80%	80%	
		PPR - wet areas	20%	20%	
		GS - dry areas	20%	20%	
		Duct installation	100%	100%	
		Cables and wires pulling	40%	40%	
		Fans	0%	0%	
		Sanitary fixtures installation	0%	0%	
		Wiring devices installation	100%	100%	
		Lighting fixtures installation	10%	10%	
Panel Board installation		10%	10%		
Mechanical functional test		10%	10%		
Electrical functional test	0%	0%			

6th Floor	Concrete Works	Columns	100%	100%	
		Slabs	100%	100%	
	Finishes	Masonry	100%	100%	
		Lintels and jambs	100%	100%	
		Wood works - subframes	100%	100%	
		Metal works - subframes	0%	0%	
		Plastering	100%	100%	
		Paint - ceilings	40%	40%	
		Floors grinding	0%	0%	
		Walls tiling (WCs and Kitchen)	0%	0%	
		Waterproofing - wet areas	0%	0%	
		False Ceilings	0%	0%	
		Floors tiling	10%	0%	
		Paint works – putty+primer	40%	40%	
		Metal works - doors & windows	0%	0%	
		Wood works - joinery & doors	0%	0%	
		Wood works - kitchens & closets	0%	0%	
		Polishing works	0%	0%	
		Paint works - final coat	0%	0%	
		Epoxy - final coat	0%	0%	
	MEP	Drainage system UPVC	80%	80%	
		PPR - wet areas	10%	10%	
		GS - dry areas	10%	10%	
		Duct installation	100%	100%	
		Cables and wires pulling	40%	40%	
		Fans	0%	0%	
		Sanitary fixtures installation	0%	0%	
		Wiring devices installation	100%	100%	
Lighting fixtures installation		10%	10%		
Panel Board installation		10%	10%		
Mechanical functional test		10%	10%		
Electrical functional test		0%	0%		

7th Floor	Concrete Works	Columns	100%	100%	
		Slabs	100%	100%	
	Finishes	Masonry	100%	100%	
		Lintels and jambs	100%	100%	
		Wood works - subframes	100%	100%	
		Metal works - subframes	0%	0%	
		Plastering	100%	100%	
		Paint - ceilings	40%	40%	
		Walls tiling (WCs and Kitchen)	0%	0%	
		Waterproofing - wet areas	0%	0%	
		False Ceilings	0%	0%	
		Floors tiling	0%	0%	
		Paint works – putty+primer	30%	30%	
		Metal works - doors & windows	0%	0%	
		Wood works - joinery & doors	0%	0%	
		Wood works - kitchens & closets	0%	0%	
		Polishing works	0%	0%	
		Paint works - final coat	0%	0%	
		Epoxy - final coat	0%	0%	
		MEP	Drainage system UPVC	70%	70%
	PPR - wet areas		0%	0%	
	GS - dry areas		0%	0%	
	Duct installation		60%	60%	
	Cables and wires pulling		60%	60%	
	Fans		0%	0%	
	Tanks		0%	0%	
	Pumps		0%	0%	
	Sanitary fixtures installation		20%	20%	
Wiring devices installation	100%		100%		
Lighting fixtures installation	0%		0%		
Panel Board installation	0%		0%		
Mechanical functional test	0%	0%			
Electrical functional test	0%	0%			

8th Floor	Concrete Works	Columns	100%	100%	
		Slabs	100%	100%	
	Finishes	Masonry	100%	100%	
		Lintels and jambs	100%	100%	
		Wood works - subframes	100%	100%	
		Metal works - subframes	0%	0%	
		Plastering	100%	100%	
		Paint - ceilings	30%	30%	
		Walls tiling (WCs and Kitchen)	0%	0%	
		Waterproofing - wet areas	0%	0%	
		False Ceilings	30%	30%	
		Floors tiling	0%	0%	
		Paint works – putty+primer	10%	10%	
		Metal works - doors & windows	0%	0%	
		Wood works - joinery & doors	0%	0%	
		Wood works - kitchens & closets	0%	0%	
		Polishing works	0%	0%	
		Paint works - final coat	0%	0%	
	Epoxy - final coat	0%	0%		
	MEP	Drainage system UPVC	70%	70%	
		PPR - wet areas	50%	50%	
		GS - dry areas	50%	50%	
		Duct installation	60%	60%	
		Cables and wires pulling	60%	60%	
		Fans	0%	0%	
		Sanitary fixtures installation	20%	20%	
		Wiring devices installation	100%	100%	
Lighting fixtures installation		10%	10%		
Panel Board installation		10%	10%		
Mechanical functional test		10%	10%		
Electrical functional test	0%	0%			

9th Floor	Concrete Works	Columns	100%	100%	
		Slabs	100%	100%	
	Finishes	Masonry	100%	100%	
		Lintels and jambs	100%	100%	
		Wood works - subframes	100%	100%	
		Metal works - subframes	0%	0%	
		Plastering	100%	100%	
		Paint - ceilings	0%	0%	
		Walls tiling (WCs and Kitchen)	0%	0%	
		Waterproofing - wet areas	0%	0%	
		False Ceilings	0%	0%	
		Floors tiling	0%	0%	
		Paint works – putty+primer	10%	10%	
		Metal works - doors & windows	0%	0%	
		Wood works - joinery & doors	0%	0%	
		Wood works - kitchens & closets	0%	0%	
		Polishing works	0%	0%	
		Paint works - final coat	0%	0%	
		Epoxy - final coat	0%	0%	
	MEP	Drainage system UPVC	70%	70%	
		PPR - wet areas	50%	50%	
GS - dry areas		50%	50%		
Duct installation		50%	50%		
Cables and wires pulling		50%	50%		
Fans		0%	0%		
Sanitary fixtures installation		20%	20%		
Wiring devices installation		100%	100%		
Lighting fixtures installation		10%	10%		
Panel Board installation		10%	10%		
Mechanical functional test		10%	10%		
Electrical functional test	0%	0%			

10th Floor	Concrete Works	Columns	100%	100%	
		Slabs	100%	100%	
	Finishes	Masonry	100%	100%	
		Lintels and jambs	100%	100%	
		Wood works - subframes	100%	100%	
		Metal works - subframes	0%	0%	
		Plastering	100%	100%	
		Paint - ceilings	0%	0%	
		Walls tiling (WCs and Kitchen)	0%	0%	
		Waterproofing - wet areas	0%	0%	
		False Ceilings	0%	0%	
		Floors tiling	0%	0%	
		Paint works – putty+primer	0%	0%	
		Metal works - doors & windows	0%	0%	
		Wood works - joinery & doors	0%	0%	
		Wood works - kitchens & closets	0%	0%	
		Paint works - final coat	0%	0%	
	Epoxy - final coat	0%	0%		
	MEP	Drainage system UPVC	50%	50%	
		PPR - wet areas	50%	50%	
		GS - dry areas	50%	50%	
		Duct installation	50%	50%	
		Cables and wires pulling	50%	50%	
		Fans	0%	0%	
		Sanitary fixtures installation	0%	0%	
		Wiring devices installation	100%	100%	
		Lighting fixtures installation	10%	10%	
Panel Board installation		10%	10%		
Mechanical functional test		10%	10%		
Electrical functional test		0%	0%		

11th Floor	Concrete Works	Columns	100%	100%	
		Slabs	100%	100%	
	Finishes	Masonry	100%	100%	
		Lintels and jambs	100%	100%	
		Wood works - subframes	100%	100%	
		Metal works - subframes	20%	20%	
		Plastering	100%	100%	
		Paint - ceilings	0%	0%	
		Walls tiling (WCs and Kitchen)	0%	0%	
		Waterproofing - wet areas	0%	0%	
		False Ceilings	0%	0%	
		Floors tiling	0%	0%	
		Paint works – putty+primer	0%	0%	
		Metal works - doors & windows	0%	0%	
		Wood works - joinery & doors	0%	0%	
		Wood works - kitchens & closets	0%	0%	
		Polishing works	0%	0%	
		Paint works - final coat	0%	0%	
		Epoxy - final coat	0%	0%	
		MEP	Drainage system UPVC	60%	60%
	PPR - wet areas		50%	50%	
	GS - dry areas		50%	50%	
	Duct installation		50%	50%	
	Cables and wires pulling		50%	50%	
	Fans		0%	0%	
	Sanitary fixtures installation		0%	0%	
	Wiring devices installation		100%	100%	
	Lighting fixtures installation		10%	10%	
	Panel Board installation		10%	10%	
	Mechanical functional test		10%	10%	
Electrical functional test	0%		0%		

12th Floor	Concrete Works	Columns	100%	100%	
		Slabs	100%	100%	
	Finishes	Masonry	100%	100%	
		Lintels and jambs	100%	100%	
		Wood works - subframes	10%	10%	
		Metal works - subframes	0%	0%	
		Plastering	80%	80%	
		Paint - ceilings	0%	0%	
		Walls tiling (WCs and Kitchen)	0%	0%	
		Waterproofing - wet areas	0%	0%	
		False Ceilings	0%	0%	
		Floors tiling	0%	0%	
		Paint works – putty+primer	0%	0%	
		Metal works - doors & windows	0%	0%	
		Wood works - joinery & doors	0%	10%	
		Wood works - kitchens & closets	0%	0%	
		Polishing works	0%	10%	
		Paint works - final coat	0%	10%	
		Epoxy - final coat	0%	0%	
	MEP	Drainage system UPVC	40%	40%	
		PPR - wet areas	0%	0%	
		GS - dry areas	0%	0%	
		Duct installation	0%	0%	
		Cables and wires pulling	10%	10%	
		Fans	0%	0%	
		Sanitary fixtures installation	10%	10%	
		Wiring devices installation	0%	0%	
Lighting fixtures installation		0%	0%		
Panel Board installation		0%	0%		
Mechanical functional test		0%	0%		
Electrical functional test		0%	0%		

13th Floor	Concrete Works	Columns	100%	100%	
		Slabs	100%	100%	
	Finishes	Masonry	100%	100%	
		Lintels and jambs	100%	100%	
		Wood works - subframes	50%	50%	
		Metal works - subframes	0%	0%	
		Plastering	90%	90%	
		Paint - ceilings	0%	0%	
		Walls tiling (WCs and Kitchen)	0%	0%	
		Waterproofing - wet areas	0%	0%	
		False Ceilings	0%	0%	
		Floors tiling	0%	0%	
		Paint works – putty+primer	0%	0%	
		Metal works - doors & windows	0%	0%	
		Wood works - joinery & doors	0%	0%	
		Wood works - kitchens & closets	0%	0%	
		Parquet	0%	0%	
		Polishing works	0%	0%	
		Paint works - final coat	0%	0%	
	Epoxy - final coat	0%	0%		
	MEP	Drainage system UPVC	20%	20%	
		PPR - wet areas	0%	0%	
		GS - dry areas	0%	0%	
		Duct installation	0%	0%	
		Cables and wires pulling	10%	10%	
		Fans	0%	0%	
		Sanitary fixtures installation	0%	0%	
		Wiring devices installation	30%	30%	
Lighting fixtures installation		10%	10%		
Panel Board installation		0%	0%		
Mechanical functional test		0%	0%		
Electrical functional test	0%	0%			

14th Floor	Concrete Works	Columns	100%	100%	
		Slabs	100%	100%	
	Finishes	Masonry	90%	90%	
		Lintels and jambs	100%	100%	
		Wood works - subframes	0%	10%	
		Metal works - subframes	0%	0%	
		Plastering	50%	50%	
		Paint - ceilings	0%	0%	
		Floors grinding	0%	0%	
		Walls tiling (WCs and Kitchen)	0%	0%	
		Waterproofing - wet areas	0%	0%	
		False Ceilings	0%	0%	
		Floors tiling	0%	0%	
		Paint works – putty+primer	0%	0%	
		Metal works - doors & windows	0%	0%	
		Wood works - joinery & doors	0%	0%	
		Wood works - kitchens & closets	0%	0%	
		Parquet	0%	0%	
		Polishing works	0%	0%	
		Paint works - final coat	0%	0%	
	Epoxy - final coat	0%	0%		
	MEP	Drainage system UPVC	20%	20%	
		PPR - wet areas	0%	0%	
		GS - dry areas	0%	0%	
		Duct installation	0%	10%	
		Cables and wires pulling	0%	0%	
		Fans	0%	0%	
		Sanitary fixtures installation	10%	10%	
Wiring devices installation		10%	10%		
Lighting fixtures installation		10%	10%		
Panel Board installation		0%	0%		
Mechanical functional test		0%	0%		
Electrical functional test		0%	0%		

b. Safety Management

OBJECTIVES

The objective of DOLMEN CONTRACTING (DC) is to control or minimize lost time injuries/accidents (LTI/A) in all project operations, and to promote an accident and injury-free (AIF) culture. Our goals are to identify and follow the most suitable and applicable local and international standards in the construction industry within a STEP CHANGE approach and to preserve a safe work environment. Our mission is to protect the Health and Safety of personnel involved in project operations while minimizing damage caused to the environment by controlling the hazards and impacts.

DC has been thoroughly monitoring all necessary procedures and the relevant implementations by the contractor. Simultaneously, ID explained to all project teams, that by complying with the occupational HSE Regulations, they also need to filter down to all laborers and operators and not only be discussed at the executive level. As a general rule, **safety is everyone's responsibility throughout the project life cycle.**

SUMMARY OF HSE REPORT

Safe Work Procedures that are reasonably practicable have been applied for most of **the project activities so far and have minimized the risk of employees' Health, Safety and Environment.**

3. PHOTOS

The following section provides some indicative idea on progress of works that were conducted by the main contractor.

They are not necessarily demonstrating all activities of works that were carried out during the period of the report.

Progress of works in BLOCK A







Progress of works in BLOCK B







