



May  
**2013**

# **PATRIARCAT 482**

## **Progress Report**

## CONTENTS

1. INTRODUCTION
  - a. Introduction
  - b. Project brief
  - c. Project particulars
  
2. EXECUTIVE SUMMARY
  - a. Project construction main data
  
3. PROGRESS OVER VIEW
  - a. Progress of works
  - b. Safety Management
  
4. PHOTOS

1.

## a. INTRODUCTION

The progress report is an assessment that takes place during a project or process, that conveys details such as what sub-goals have been accomplished, what resources have been expended, what problems have been encountered, and whether the project or process is expected to be completed on time and within budget.

It is intended to be a proactive decision- making document; a separate section on actions and alerts has been highlighted for each action along the due dates.

This report also provides a streamlined analysis of the actual, planned and forecasted events of the project.

The executive summary will provide brief information on the project status.

The general progress overview will provide details on progress achieved to date on the project. The progress that is reported encompasses time, cost, quality, risk, scope, procurement, resources, and safety management.

## b. PROJECT BRIEF

**PATRIARCAT RESIDENCE 482 (PR)**, is located in the prestigious location of Batrakiyeh in Beirut city. Its proximity to Solidere, Verdun, Hamra and Achrafieh is one of its biggest assets, as they are easily reached and the Rafic Hariri International Airport is **less than 15 minutes away via the highway. All of Beirut' s amenities and all of Lebanon are readily accessible to Patriarcats Tower' s residents.**

Below are some views of the project' s exterior and interior views:





01

PERSPECTIVE VIEW

A09

PATRIARCAS  
TOWERS 482





## c. PROJECT PARTICULARS

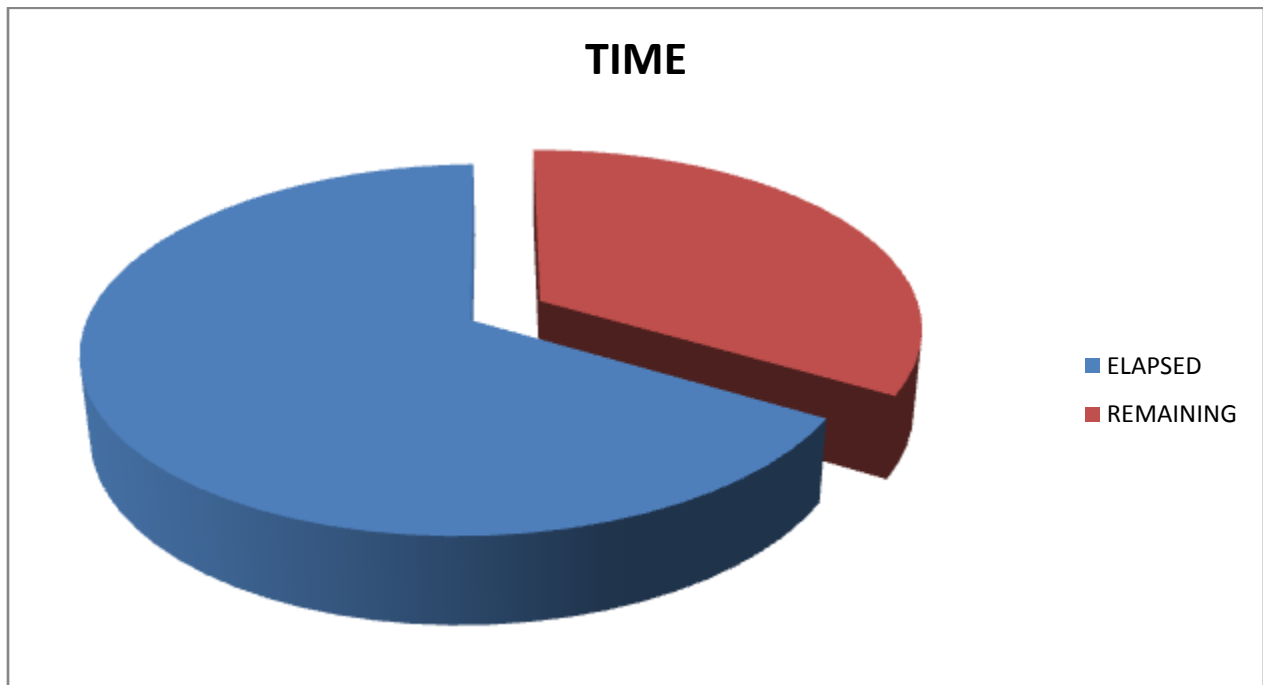
Project Title:	Patriarcat Residence 482	PR
Location:	Beirut, Lebanon	
Developer:	BMI SAL	BMI
Main Contractor:	Dolmen Contracting	DC
Consultant:	MN- Line Architects	MNL
MEP Subcontractor:	AlBonian Group	BG

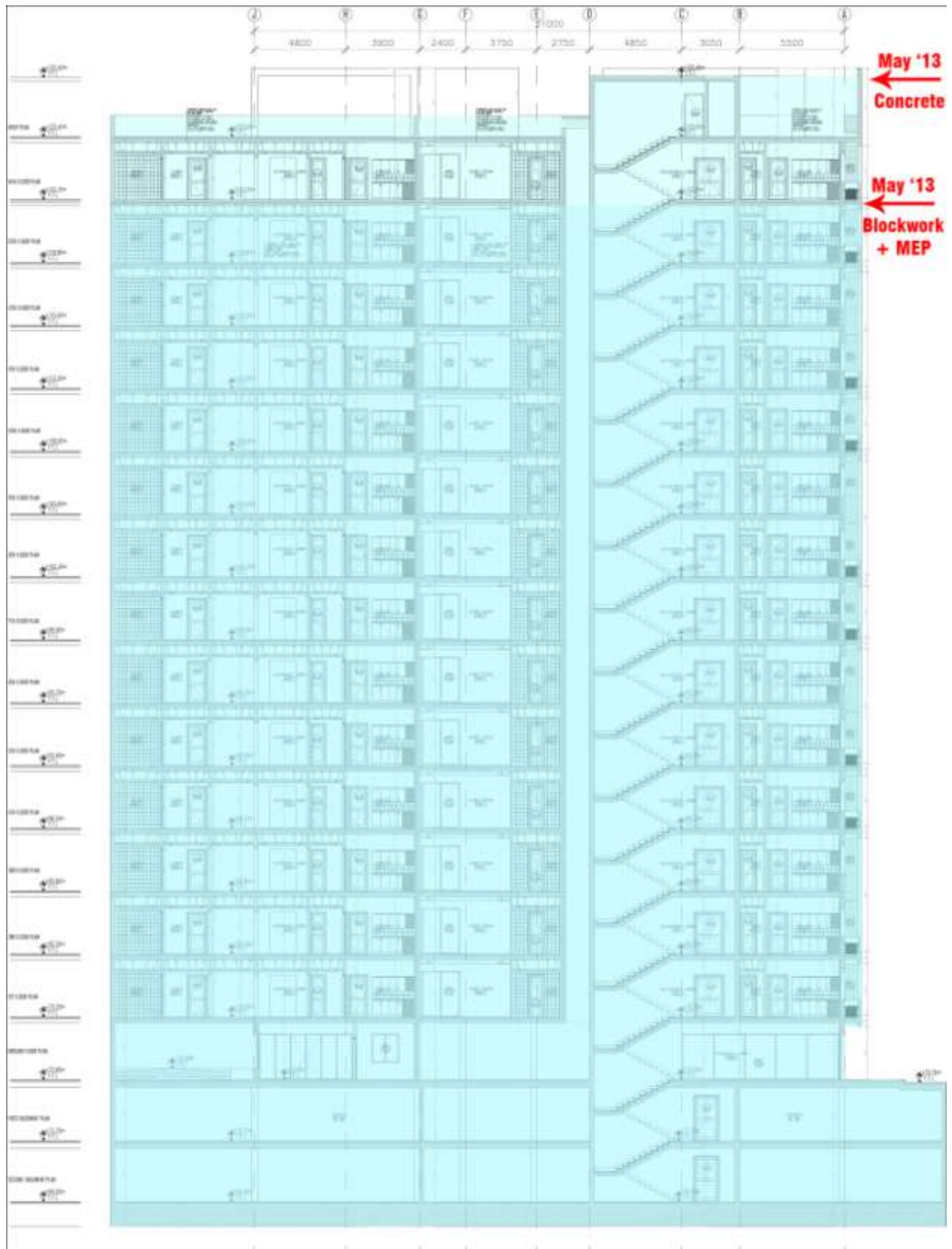


## 2. EXECUTIVE SUMMARY

### a. Project Construction Main Data

Project name	
Project Budget	4,500,000 \$
Project Start Date	October 2011
Project Finish Date	December 2013
Project Duration	820 days
Days Elapsed	544
Percentage Of days elapsed	66.3 %





### 3. PROGRESS OVERVIEW

#### a. Progress of Works

Basement 2	Concrete Works	Columns	100%	100%	
		Slabs	100%	100%	
	Finishes	Masonry	100%	100%	
		Lintels and jambs	100%	100%	
		Wood works - subframes	0%	0%	
		Metal works - subframes	0%	0%	
		Plastering	50%	50%	
		Paint - ceilings	0%	0%	
		Floors tiling	0%	0%	
		Paint works – putty+primer	0%	0%	
		Metal works - doors & windows	0%	0%	
		Wood works - joinery & doors	0%	0%	
		Wood works -	0%	0%	
		Polishing works	0%	0%	
		Paint works - final coat	0%	0%	
		Epoxy - final coat	0%	0%	
		MEP	Drainage system UPVC	40%	40%
	Duct installation		0%	0%	
	Cables and wires pulling		40%	40%	
	Fans		0%	0%	
	Tanks		0%	0%	
	Pumps		0%	0%	
	Wiring devices installation		40%	40%	
	Lighting fixtures installation		10%	10%	
	Panel Board installation		10%	10%	
	Mechanical functional test		0%	0%	
	Electrical functional test		0%	0%	

<b>Basement 1</b>	Concrete Works	Columns	100%	100%	
		Slabs	100%	100%	
	Finishes	Masonry	0%	0%	
		Lintels and jambs	0%	0%	
		Wood works - subframes	0%	0%	
		Metal works - subframes	0%	0%	
		Plastering	50%	50%	
		Paint - ceilings	0%	0%	
		Floors tiling	0%	0%	
		Paint works – putty+primer	0%	0%	
		Metal works - doors & windows	0%	0%	
		Wood works - joinery & doors	0%	0%	
		Wood works -	0%	0%	
		Polishing works	0%	0%	
		Paint works - final coat	0%	0%	
		Epoxy - final coat	0%	0%	
	MEP	Drainage system UPVC	40%	40%	
		Duct installation	0%	0%	
		Cables and wires pulling	0%	0%	
		Fans	0%	0%	
		Wiring devices installation	10%	10%	
		Lighting fixtures installation	10%	10%	
		Panel Board installation	0%	0%	
Mechanical functional test		0%	0%		
Electrical functional test		0%	0%		

Ground Floor	Concrete Works	Columns	100%	100%	
		Slabs	100%	100%	
	Finishes	Masonry	40%	40%	
		Lintels and jambs	40%	40%	
		Wood works - subframes	0%	0%	
		Metal works - subframes	0%	0%	
		Plastering	10%	10%	
		Paint - ceilings	0%	0%	
		Walls tiling (WCs and Kitchen)	0%	0%	
		Waterproofing - wet areas	0%	0%	
		False Ceilings	0%	0%	
		Floors tiling	0%	0%	
		Paint works – putty+primer	0%	0%	
		Metal works - doors & windows	0%	0%	
		Wood works - joinery & doors	0%	0%	
		Wood works - kitchens & closets	0%	0%	
		Polishing works	0%	0%	
		Paint works - final coat	0%	0%	
	Epoxy - final coat	0%	0%		
	MEP	Drainage system UPVC	40%	40%	
		PPR - wet areas	0%	0%	
		GS - dry areas	0%	0%	
		Duct installation	0%	0%	
		Cables and wires pulling	40%	40%	
		Fans	0%	0%	
		Tanks	0%	0%	
		Pumps	0%	0%	
		Sanitary fixtures installation	0%	0%	
Wiring devices installation		40%	40%		
Lighting fixtures installation		0%	0%		
Panel Board installation		0%	0%		
Mechanical functional test	0%	0%			
Electrical functional test	0%	0%			

<b>1st Floor</b>	Concrete Works	Columns	100%	100%	
		Slabs	100%	100%	
	Finishes	Masonry	100%	100%	
		Lintels and jambs	100%	100%	
		Wood works - subframes	100%	100%	
		Metal works - subframes	0%	0%	
		Plastering	100%	100%	
		Paint - ceilings	40%	20%	
		Walls tiling (WCs and Kitchen)	0%	0%	
		Waterproofing - wet areas	0%	0%	
		False Ceilings	0%	0%	
		Floors tiling	0%	0%	
		Paint works – putty+primer	40%	40%	
		Metal works - doors & windows	0%	0%	
		Wood works - joinery & doors	0%	0%	
		Wood works - kitchens & closets	0%	0%	
		Polishing works	0%	0%	
	Paint works - final coat	0%	0%		
	Epoxy - final coat	0%	0%		
	MEP	Drainage system UPVC	70%	70%	
		PPR - wet areas	60%	60%	
		GS - dry areas	60%	60%	
		Duct installation	100%	100%	
		Cables and wires pulling	80%	80%	
		Fans	0%	0%	
		Sanitary fixtures installation	0%	0%	
		Wiring devices installation	80%	80%	
Lighting fixtures installation		0%	0%		
Panel Board installation		0%	0%		
Mechanical functional test		0%	0%		
Electrical functional test		0%	0%		

2nd Floor	Concrete Works	Columns	100%	100%	
		Slabs	100%	100%	
	Finishes	Masonry	100%	100%	
		Lintels and jambs	100%	100%	
		Wood works - subframes	100%	100%	
		Metal works - subframes	80%	80%	
		Plastering	100%	100%	
		Paint - ceilings	0%	0%	
		Floors grinding	0%	0%	
		Walls tiling (WCs and Kitchen)	0%	0%	
		Waterproofing - wet areas	80%	80%	
		False Ceilings	0%	0%	
		Floors tiling	0%	0%	
		Paint works – putty+primer	0%	0%	
		Metal works - doors & windows	0%	0%	
		Wood works - joinery & doors	0%	0%	
		Wood works - kitchens & closets	0%	0%	
		Polishing works	0%	0%	
		Paint works - final coat	0%	0%	
		Epoxy - final coat	0%	0%	
	MEP	Drainage system UPVC	70%	70%	
		PPR - wet areas	0%	0%	
		GS - dry areas	0%	0%	
		Duct installation	100%	100%	
		Cables and wires pulling	80%	80%	
		Fans	0%	0%	
		Sanitary fixtures installation	0%	0%	
Wiring devices installation		50%	50%		
Lighting fixtures installation		40%	40%		
Panel Board installation		0%	0%		
Mechanical functional test		0%	0%		
Electrical functional test	0%	0%			

3rd Floor	Concrete Works	Columns	100%	100%	
		Slabs	100%	100%	
	Finishes	Masonry	100%	100%	
		Lintels and jambs	100%	100%	
		Wood works - subframes	100%	100%	
		Metal works - subframes	0%	0%	
		Plastering	100%	100%	
		Paint - ceilings	0%	0%	
		Floors grinding	0%	0%	
		Walls tiling (WCs and Kitchen)	0%	0%	
		Waterproofing - wet areas	0%	0%	
		False Ceilings	0%	0%	
		Floors tiling	0%	0%	
		Paint works – putty+primer	0%	0%	
		Metal works - doors & windows	0%	0%	
		Wood works - joinery & doors	0%	0%	
		Wood works - kitchens & closets	0%	0%	
		Polishing works	0%	0%	
		Paint works - final coat	0%	0%	
		Epoxy - final coat	0%	0%	
	MEP	Drainage system UPVC	50%	50%	
		PPR - wet areas	0%	0%	
		GS - dry areas	0%	0%	
		Duct installation	0%	0%	
		Cables and wires pulling	0%	0%	
		Fans	0%	0%	
		Sanitary fixtures installation	0%	0%	
Wiring devices installation		0%	0%		
Lighting fixtures installation		40%	40%		
Panel Board installation		0%	0%		
Mechanical functional test		0%	0%		
Electrical functional test	0%	0%			



4th Floor	Concrete Works	Columns	100%	100%	
		Slabs	100%	100%	
	Finishes	Masonry	100%	100%	
		Lintels and jambs	100%	100%	
		Wood works - subframes	100%	100%	
		Metal works - subframes	0%	0%	
		Plastering	100%	100%	
		Paint - ceilings	0%	0%	
		Walls tiling (WCs and Kitchen)	0%	0%	
		Waterproofing - wet areas	0%	0%	
		False Ceilings	0%	0%	
		Floors tiling	0%	0%	
		Paint works – putty+primer	0%	0%	
		Metal works - doors & windows	0%	0%	
		Wood works - joinery & doors	0%	0%	
		Wood works - kitchens & closets	0%	0%	
		Polishing works	0%	0%	
		Paint works - final coat	0%	0%	
	Epoxy - final coat	0%	0%		
	MEP	Drainage system UPVC	70%	70%	
		PPR - wet areas	0%	0%	
		GS - dry areas	0%	0%	
		Duct installation	100%	100%	
		Cables and wires pulling	0%	0%	
		Fans	0%	0%	
		Sanitary fixtures installation	0%	0%	
		Wiring devices installation	50%	50%	
Lighting fixtures installation		0%	0%		
Panel Board installation		0%	0%		
Mechanical functional test		0%	0%		
Electrical functional test	0%	0%			

5th Floor	Concrete Works	Columns	100%	100%	
		Slabs	100%	100%	
	Finishes	Masonry	100%	100%	
		Lintels and jambs	100%	100%	
		Wood works - subframes	100%	100%	
		Metal works - subframes	0%	0%	
		Plastering	100%	100%	
		Paint - ceilings	0%	0%	
		Walls tiling (WCs and Kitchen)	0%	0%	
		Waterproofing - wet areas	0%	0%	
		False Ceilings	0%	0%	
		Floors tiling	0%	0%	
		Paint works – putty+primer	0%	0%	
		Metal works - doors & windows	0%	0%	
		Wood works - joinery & doors	0%	0%	
		Wood works - kitchens & closets	0%	0%	
		Polishing works	0%	0%	
		Paint works - final coat	0%	0%	
	Epoxy - final coat	0%	0%		
	MEP	Drainage system UPVC	80%	80%	
		PPR - wet areas	0%	0%	
		GS - dry areas	0%	0%	
		Duct installation	100%	100%	
		Cables and wires pulling	40%	40%	
		Fans	0%	0%	
		Sanitary fixtures installation	0%	0%	
		Wiring devices installation	100%	100%	
Lighting fixtures installation		0%	0%		
Panel Board installation		0%	0%		
Mechanical functional test		0%	0%		
Electrical functional test	0%	0%			

6th Floor	Concrete Works	Columns	100%	100%	
		Slabs	100%	100%	
	Finishes	Masonry	100%	100%	
		Lintels and jambs	100%	100%	
		Wood works - subframes	100%	100%	
		Metal works - subframes	0%	0%	
		Plastering	100%	100%	
		Paint - ceilings	0%	0%	
		Floors grinding	0%	0%	
		Walls tiling (WCs and Kitchen)	0%	0%	
		Waterproofing - wet areas	0%	0%	
		False Ceilings	0%	0%	
		Floors tiling	0%	0%	
		Paint works – putty+primer	0%	0%	
		Metal works - doors & windows	0%	0%	
		Wood works - joinery & doors	0%	0%	
		Wood works - kitchens & closets	0%	0%	
		Polishing works	0%	0%	
		Paint works - final coat	0%	0%	
		Epoxy - final coat	0%	0%	
	MEP	Drainage system UPVC	80%	80%	
		PPR - wet areas	0%	0%	
		GS - dry areas	0%	0%	
		Duct installation	100%	100%	
		Cables and wires pulling	40%	40%	
		Fans	0%	0%	
		Sanitary fixtures installation	0%	0%	
Wiring devices installation		100%	100%		
Lighting fixtures installation		0%	0%		
Panel Board installation		0%	0%		
Mechanical functional test		0%	0%		
Electrical functional test	0%	0%			

7th Floor	Concrete Works	Columns	100%	100%	
		Slabs	100%	100%	
	Finishes	Masonry	100%	100%	
		Lintels and jambs	100%	100%	
		Wood works - subframes	100%	100%	
		Metal works - subframes	0%	0%	
		Plastering	100%	100%	
		Paint - ceilings	0%	0%	
		Walls tiling (WCs and Kitchen)	0%	0%	
		Waterproofing - wet areas	0%	0%	
		False Ceilings	0%	0%	
		Floors tiling	0%	0%	
		Paint works – putty+primer	0%	0%	
		Metal works - doors & windows	0%	0%	
		Wood works - joinery & doors	0%	0%	
		Wood works - kitchens & closets	0%	0%	
		Polishing works	0%	0%	
		Paint works - final coat	0%	0%	
	Epoxy - final coat	0%	0%		
	MEP	Drainage system UPVC	70%	70%	
		PPR - wet areas	0%	0%	
		GS - dry areas	0%	0%	
		Duct installation	40%	40%	
		Cables and wires pulling	40%	40%	
		Fans	0%	0%	
		Tanks	0%	0%	
		Pumps	0%	0%	
		Sanitary fixtures installation	0%	0%	
Wiring devices installation		100%	100%		
Lighting fixtures installation		0%	0%		
Panel Board installation		0%	0%		
Mechanical functional test	0%	0%			
Electrical functional test	0%	0%			

8th Floor	Concrete Works	Columns	100%	100%	
		Slabs	100%	100%	
	Finishes	Masonry	100%	100%	
		Lintels and jambs	100%	100%	
		Wood works - subframes	100%	100%	
		Metal works - subframes	0%	0%	
		Plastering	100%	100%	
		Paint - ceilings	0%	0%	
		Walls tiling (WCs and Kitchen)	0%	0%	
		Waterproofing - wet areas	0%	0%	
		False Ceilings	0%	0%	
		Floors tiling	0%	0%	
		Paint works – putty+primer	0%	0%	
		Metal works - doors & windows	0%	0%	
		Wood works - joinery & doors	0%	0%	
		Wood works - kitchens & closets	0%	0%	
		Polishing works	0%	0%	
	Paint works - final coat	0%	0%		
	Epoxy - final coat	0%	0%		
	MEP	Drainage system UPVC	70%	70%	
		PPR - wet areas	0%	0%	
		GS - dry areas	0%	0%	
		Duct installation	0%	0%	
		Cables and wires pulling	0%	0%	
		Fans	0%	0%	
		Sanitary fixtures installation	0%	0%	
		Wiring devices installation	100%	100%	
Lighting fixtures installation		0%	0%		
Panel Board installation		0%	0%		
Mechanical functional test		0%	0%		
Electrical functional test		0%	0%		

9th Floor	Concrete Works	Columns	100%	100%	
		Slabs	100%	100%	
	Finishes	Masonry	100%	100%	
		Lintels and jambs	100%	100%	
		Wood works - subframes	100%	100%	
		Metal works - subframes	0%	0%	
		Plastering	100%	100%	
		Paint - ceilings	0%	0%	
		Walls tiling (WCs and Kitchen)	0%	0%	
		Waterproofing - wet areas	0%	0%	
		False Ceilings	0%	0%	
		Floors tiling	0%	0%	
		Paint works – putty+primer	0%	0%	
		Metal works - doors & windows	0%	0%	
		Wood works - joinery & doors	0%	0%	
		Wood works - kitchens & closets	0%	0%	
		Polishing works	0%	0%	
	Paint works - final coat	0%	0%		
	Epoxy - final coat	0%	0%		
	MEP	Drainage system UPVC	70%	70%	
		PPR - wet areas	0%	0%	
		GS - dry areas	0%	0%	
		Duct installation	0%	0%	
		Cables and wires pulling	0%	0%	
		Fans	0%	0%	
		Sanitary fixtures installation	0%	0%	
		Wiring devices installation	100%	100%	
Lighting fixtures installation		0%	0%		
Panel Board installation		0%	0%		
Mechanical functional test		0%	0%		
Electrical functional test		0%	0%		

10th Floor	Concrete Works	Columns	100%	100%	
		Slabs	100%	100%	
	Finishes	Masonry	100%	100%	
		Lintels and jambs	100%	100%	
		Wood works - subframes	100%	100%	
		Metal works - subframes	0%	0%	
		Plastering	100%	100%	
		Paint - ceilings	0%	0%	
		Walls tiling (WCs and Kitchen)	0%	0%	
		Waterproofing - wet areas	0%	0%	
		False Ceilings	0%	0%	
		Floors tiling	0%	0%	
		Paint works – putty+primer	0%	0%	
		Metal works - doors & windows	0%	0%	
		Wood works - joinery & doors	0%	0%	
		Wood works - kitchens & closets	0%	0%	
		Paint works - final coat	0%	0%	
	Epoxy - final coat	0%	0%		
	MEP	Drainage system UPVC	50%	50%	
		PPR - wet areas	0%	0%	
		GS - dry areas	0%	0%	
		Duct installation	0%	0%	
		Cables and wires pulling	0%	0%	
		Fans	0%	0%	
		Sanitary fixtures installation	0%	0%	
		Wiring devices installation	100%	100%	
		Lighting fixtures installation	0%	0%	
Panel Board installation		0%	0%		
Mechanical functional test		0%	0%		
Electrical functional test		0%	0%		

11th Floor	Concrete Works	Columns	100%	100%	
		Slabs	100%	100%	
	Finishes	Masonry	100%	100%	
		Lintels and jambs	100%	100%	
		Wood works - subframes	100%	100%	
		Metal works - subframes	0%	0%	
		Plastering	100%	100%	
		Paint - ceilings	0%	0%	
		Walls tiling (WCs and Kitchen)	0%	0%	
		Waterproofing - wet areas	0%	0%	
		False Ceilings	0%	0%	
		Floors tiling	0%	0%	
		Paint works – putty+primer	0%	0%	
		Metal works - doors & windows	0%	0%	
		Wood works - joinery & doors	0%	0%	
		Wood works - kitchens & closets	0%	0%	
		Parquet	0%	0%	
		Polishing works	0%	0%	
		Paint works - final coat	0%	0%	
	Epoxy - final coat	0%	0%		
	MEP	Drainage system UPVC	50%	50%	
		PPR - wet areas	0%	0%	
		GS - dry areas	0%	0%	
		Duct installation	0%	0%	
		Cables and wires pulling	0%	0%	
		Fans	0%	0%	
		Sanitary fixtures installation	0%	0%	
		Wiring devices installation	100%	100%	
Lighting fixtures installation		0%	0%		
Panel Board installation		0%	0%		
Mechanical functional test		0%	0%		
Electrical functional test	0%	0%			



12th Floor	Concrete Works	Columns	100%	100%	
		Slabs	100%	100%	
	Finishes	Masonry	100%	100%	
		Lintels and jambs	100%	100%	
		Wood works - subframes	0%	0%	
		Metal works - subframes	0%	0%	
		Plastering	0%	0%	
		Paint - ceilings	0%	0%	
		Walls tiling (WCs and Kitchen)	0%	0%	
		Waterproofing - wet areas	0%	0%	
		False Ceilings	0%	0%	
		Floors tiling	0%	0%	
		Paint works – putty+primer	0%	0%	
		Metal works - doors & windows	0%	0%	
		Wood works - joinery & doors	0%	0%	
		Wood works - kitchens & closets	0%	0%	
		Parquet	0%	0%	
		Polishing works	0%	0%	
		Paint works - final coat	0%	0%	
	Epoxy - final coat	0%	0%		
	MEP	Drainage system UPVC	20%	20%	
		PPR - wet areas	0%	0%	
		GS - dry areas	0%	0%	
		Duct installation	0%	0%	
		Cables and wires pulling	0%	0%	
		Fans	0%	0%	
		Sanitary fixtures installation	0%	0%	
		Wiring devices installation	0%	20%	
		Lighting fixtures installation	0%	0%	
Panel Board installation		0%	0%		
Mechanical functional test		0%	0%		
Electrical functional test		0%	0%		

13th Floor	Concrete Works	Columns	100%	100%	
		Slabs	100%	100%	
	Finishes	Masonry	60%	60%	
		Lintels and jambs	60%	0%	
		Wood works - subframes	0%	0%	
		Metal works - subframes	0%	0%	
		Plastering	0%	0%	
		Paint - ceilings	0%	0%	
		Walls tiling (WCs and Kitchen)	0%	0%	
		Waterproofing - wet areas	0%	0%	
		False Ceilings	0%	0%	
		Floors tiling	0%	0%	
		Paint works – putty+primer	0%	0%	
		Metal works - doors & windows	0%	0%	
		Wood works - joinery & doors	0%	0%	
		Wood works - kitchens & closets	0%	0%	
		Parquet	0%	0%	
		Polishing works	0%	0%	
		Paint works - final coat	0%	0%	
		Epoxy - final coat	0%	0%	
	MEP	Drainage system UPVC	20%	20%	
		PPR - wet areas	0%	0%	
		GS - dry areas	0%	0%	
		Duct installation	0%	0%	
		Cables and wires pulling	0%	0%	
		Fans	0%	0%	
		Sanitary fixtures installation	0%	0%	
		Wiring devices installation	20%	20%	
		Lighting fixtures installation	0%	0%	
		Panel Board installation	0%	0%	
Mechanical functional test		0%	0%		
Electrical functional test		0%	0%		

14th Floor	Concrete Works	Columns	100%	100%	
		Slabs	100%	100%	
	Finishes	Masonry	0%	0%	
		Lintels and jambs	0%	0%	
		Wood works - subframes	0%	0%	
		Metal works - subframes	0%	0%	
		Plastering	0%	0%	
		Paint - ceilings	0%	0%	
		Floors grinding	0%	0%	
		Walls tiling (WCs and Kitchen)	0%	0%	
		Waterproofing - wet areas	0%	0%	
		False Ceilings	0%	0%	
		Floors tiling	0%	0%	
		Paint works – putty+primer	0%	0%	
		Metal works - doors & windows	0%	0%	
		Wood works - joinery & doors	0%	0%	
		Wood works - kitchens & closets	0%	0%	
		Parquet	0%	0%	
		Polishing works	0%	0%	
	Paint works - final coat	0%	0%		
	Epoxy - final coat	0%	0%		
	MEP	Drainage system UPVC	0%	0%	
		PPR - wet areas	0%	0%	
		GS - dry areas	0%	0%	
		Duct installation	0%	0%	
		Cables and wires pulling	0%	0%	
		Fans	0%	0%	
Sanitary fixtures installation		0%	0%		
Wiring devices installation		0%	0%		
Lighting fixtures installation		0%	0%		
Panel Board installation		0%	0%		
Mechanical functional test		0%	0%		
Electrical functional test		0%	0%		

## b. Safety Management

### OBJECTIVES

The objective of DOLMEN CONTRACTING (DC) is to control or minimize lost time injuries/accidents (LTI/A) in all project operations, and to promote an accident and injury-free (AIF) culture. Our goals are to identify and follow the most suitable and applicable local and international standards in the construction industry within a STEP CHANGE approach and to preserve a safe work environment. Our mission is to protect the Health and Safety of personnel involved in project operations while minimizing damage caused to the environment by controlling the hazards and impacts.

DC has been thoroughly monitoring all necessary procedures and the relevant implementations by the contractor. Simultaneously, ID explained to all project teams, that by complying with the occupational HSE Regulations, they also need to filter down to all laborers and operators and not only be discussed at the executive level. As a general rule, **safety is everyone's responsibility throughout the project life cycle.**

### SUMMARY OF HSE REPORT

Safe Work Procedures that are reasonably practicable have been applied for most of the **project activities so far and have minimized the risk of employees' Health, Safety and Environment.**

### REPORT:

Appended is the health and safety report that was provided by the health and safety department for the correspondent month of May 2013.

### 3. PHOTOS

The following section provides some indicative idea on progress of works that were conducted by the main contractor.

They are not necessarily demonstrating all activities of works that were carried out during the period of the report.





Progress of works - 1<sup>st</sup> floor





Progress of works - 6<sup>th</sup> and 7<sup>th</sup> floors





Progress of works - 8<sup>th</sup> and 9<sup>th</sup> floors







Progress of works - 10<sup>th</sup> and 11<sup>th</sup> floors





Progress of works - 12<sup>th</sup> floor





Ground floor and exterior ramp



CONSTRUCTION SITE

**MONTHLY HEALTH AND SAFETY INSPECTION CHECK LIST**

<b>COMPANY NAME</b>	Dolmen Contracting SAL
<b>SITE NAME</b>	BatrakyeH
<b>INSPECTION COMPLETED BY</b>	H&S Coordinator: Ahmad Chehaitly
<b>DATE</b>	May2013

<b>GENERAL ISSUES</b>	<b>YES</b>	<b>NO</b>	<b>NOTES</b>
The company health and safety policy is available to all.		X	<b>All persons on the site are informed about all safety steps that they should follow up</b>
The Pre Construction Information is available on site.		X	
The Construction Phase Health and Safety Plan is Available on Site.		X	
Risk Assessments /Method Statements have been completed and made available to all parties.	X		
All persons on site have completed a site induction program.	X		
All statutory notices are displayed.			
Appropriate site safety signage is in place.	X		
A system is in place to allow all persons on site to raise health and safety issues with management.			
All persons on site are aware of the Permit to Work System	X		
There is a system in place to monitor the presence of lone, or out of hour's workers.	X		
<b>EMERGENCY PROCEDURES</b>	<b>YES</b>	<b>NO</b>	<b>NOTES</b>
Risk Assessments /Method Statements have been completed and made available to all parties		X	
Fire action notices are in place	X		
Fire fighting equipment is readily available.	X		
All persons working on site are familiar with the location of this equipment	X		
All persons on site have inducted into the emergency procedures for the site.	X		
Exit routes are clearly marked	X		
Assembly points are clearly marked	X		
Are there sufficient First Aid notices informing staff of how and where to gain First Aid help?	X		
Clearly displayed notices advise how to contact the emergency	X		

services			
Is the location of the first aid box clearly signed?	X		
The first aid box suitably stocked and replenished when necessary	X		
<b>SCAFFOLDS</b>	<b>YES</b>	<b>NO</b>	<b>NOTES</b>
Risk Assessments /Method Statements have been completed and made available to all parties.		X	
All alterations are carried out and certified by a competent person.	X		
Safe access is available to the scaffold.	X		
Uprights are provided with base plates and sole plates.	X		
All ledgers braces and struts are in position.	X		
The scaffold is secured to minimise the likelihood of collapse.	X		
Guard rails and toe boards have been installed in accordance with best practice.	X		
<b>LADDERS</b>	<b>YES</b>	<b>NO</b>	<b>NOTES</b>
Risk Assessments /Method Statements have been completed and made available to all parties		X	
Ladders are secured to prevent slippage.	X		
Ladders extend the correct distance above the working platform.	X		
<b>WORKING AT HEIGHT</b>	<b>YES</b>	<b>NO</b>	<b>NOTES</b>
Risk Assessments /Method Statements have been completed and made available to all parties.	X		
There is adequate edge protection.	X		
Harnesses (safety belts) are available and used.	X		
No work is allowed under areas with persons working at height.	X		
Debris protection is in place	X		
Safety nets/air bags are in place.	X		Air bags not existed
<b>EXCAVATIONS</b>	<b>YES</b>	<b>NO</b>	<b>NOTES</b>
Risk Assessments /Method Statements have been completed and made available to all parties		X	
Properly designed and maintained support systems are in place.		X	
Safe secure access to the excavation is in place		X	
Sufficient barriers are in place to stop persons accidentally falling into the excavation		X	
The stability of adjacent structures has been considered in relation to excavation work		X	
Plant, materials and spoil are stored away from the excavation to minimise the possibility of collapse		X	
The excavation is inspected and the results recorded by a competent person on a regular basis.		X	
<b>VEHICLES ON SITE</b>	<b>YES</b>	<b>NO</b>	<b>NOTES</b>
Risk Assessments /Method Statements have been completed and made available to all parties.		X	
Separate pedestrian and vehicle routes are clearly marked.	X		
One systems and turning areas are provided to minimise the need for reversing.	X		

Vehicles have reversing warning alarms.	X		
The vehicles are properly maintained.	X		
<b>WELFARE</b>	<b>YES</b>	<b>NO</b>	<b>NOTES</b>
Risk Assessments /Method Statements have been completed and made available to all parties		X	
The correct number of toilets are provided and maintained/cleaned.	X		
Hot and cold water is provided to the washing facilities.	X		
Soap and towels are provided.	X		
Correct wet and dirty working clothing is provided.		X	
Changing and drying facilities are provided and maintained.	X		
Drinking water is provided.	X		
Safety boots, helmets and high visibility jackets are provided.	X		

<b>ADDITIONAL ITEMS</b>	<b>YES</b>	<b>NO</b>	<b>NOTES</b>
Hoist			<b>Hoist is removed to be maintained</b>
EXCAVATIONS			<b>Only lift openings found and all are safe and fenced.</b>